

THE NEWEST AND LARGEST HEALTHCARE STORAGE



HEALTHCARE DIVISION BY
KEWAUNEE

At EVERHUTCH we make vital products for the healthcare space. We provide you with STORAGE WITH PURPOSE that you need to organize and optimize your environment with our procedure carts and cabinets.

EVERHUTCH leverages more than a century of experience from Kewaunee, a recognized global leader in the design, manufacture, and installation of laboratory, healthcare, and technical furniture products.

A North Carolina-based company founded in 1906, KEWAUNEE'S history of quality products and scientific expertise empowers EVERHUTCH to provide you with healthcare solutions to deliver quality patient care. With a suite of products designed to meet the needs of both the modern healthcare setting and clinical lab space, flexibility and adjustability are essential.

Our long-standing history of working with architects and planners means no project is too small or large. Our manufacturing capabilities are unrivaled in healthcare, from individual carts to capital projects for new construction hospitals. We can provide any or all products by leveraging our own local warehousing ensuring on-time delivery for your project.

We've got you from start to finish. Our products are proudly made in the United States under one roof, ensuring quality and reliability throughout the entire process.





EVERHUTCH



CORE & CORE

CART CABINET

PROCEDURE CABINET

CORE

BENCH

PROCEDURE BACKTABLE



STAT

CART

PROCEDURE CART



NEST

CART

UTILITY CART



STAT CART

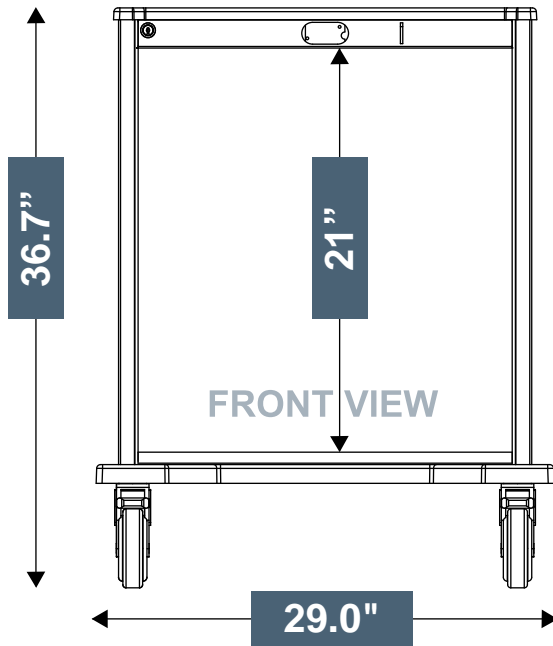
WIDTH
HEIGHT
COLOR
DRAWER CONFIG
TRAY CONFIG
LOCK OPTIONS
ACCESSORIES

YOUR CART

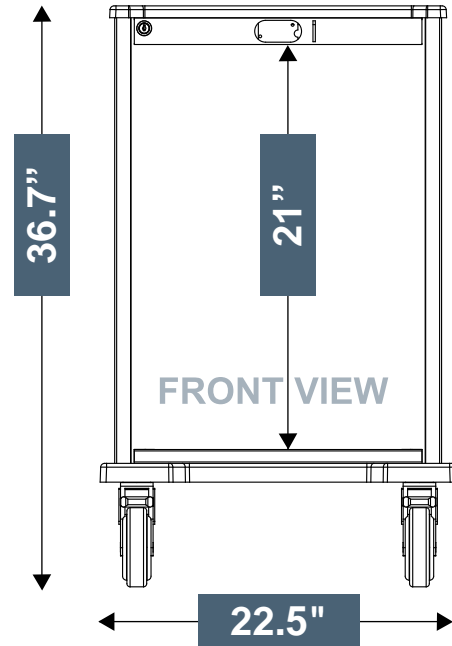


This procedure cart was specifically designed for patients and caregivers in mind. Defining features promote infection control, adaptability and durability. STATCART standard sizes and options in drawers and trays were made to be compatible with existing procedure carts on the market today. This compatibility creates conformity and allows hospitals to easily upgrade their cart without the need to update protocols. STATCART is quickly adaptable to meet the demands of different departments with an efficient Equipment Management Rail System. With just a click you can configure your cart on this double-sided rail system. Due to the adaptability of its components, this system allows customers to find the optimal solution to answer specific clinical needs. Available with multiple lock options including a keyed lock, electronic keypad and electronic keypad with proximity card reader. The locking system can also be set up to offer dual credential unlocking. The cart is easily maneuvered around on plate-mounted swivel and locking casters. This high quality storage system is manufactured and sourced in the US and can withstand any demanding healthcare environment.

STAT CART | SPECIFICATION



**STANDARD
MSCxxAM**



**NARROW
MSCxxBM**

SPECIFICATIONS

Maneuvers Easily

- Heavy-duty construction
- 5" locking swivel casters
- 5" tracking caster

Supports Thorough Cleaning

- Integrated seams
- Smooth exposed surfaces
- Chemical resistant powder coat
- Corner posts with less channels to clean
- Removable draws & trays
- Scratch resistant work surface with drip edge & smooth corners for easy cleaning

Security

- Key lock
- Electronic keypad
- Prox card reader (High and Low frequency's)
- Self-closing drawers

Adaptable To Your Workflow

- Configurable drawers of increments of 3" – 6" and 9"
- Full-extension, soft closing drawers
- Interchangeable components with Paladin Health-care Equipment Management Rail System
- 8 STATCART configurations available in 2 widths and four heights.

SPECIFICATIONS

Caster

- 5" Swivel Locking Casters:
3 Total Lock & 1 Direction Lock
- 3.875" Caster Overall

Material

- Shell 18-Gauge Steel
- Drawers 20-Gauge Steel

Finish

- ABC Powder Coat

Drawer handles

- Brushed Stainless Steel

Warranty

- Limited Life Time Warranty

STAT CART | LOCK OPTIONS

CONFIGURE YOUR CART SECURITY WITH THESE LOCK OPTIONS



MANUAL LOCK -01
comes as standard



ELECTRONIC LOCK -05

- 250 user/supervisor codes
- Flush mounted membrane keypad with Battery pack.
- Standard RJ11 communications port for audit trail download
- Audit trail of last 1500 access attempts with date, time and user name
- Motor driven latching mechanism



KEYLESS ELECTRONIC KEYPAD -06 PROXIMITY CARD HID ACCESS

KEYLESS ELECTRONIC KEYPAD -07 I-CLASS HID ACCESS HIGH FREQUENCY

BREAKAWAY -08



GANG LOCK -09



2 GANG LOCK -10



STAT CART | WIDTH & HEIGHT

STANDARD WIDTH 29"

36"H



MSC21AM

40"H



MSC24AM

44"H



MSC27AM

47"H



MSC30AM

NARROW WIDTH 22.5"

36"H



MSC21BM

40"H



MSC24BM

44"H



MSC27BM

47"H



MSC30BM

COLOR COMBINATIONS

Drawer faces can be colored separately from cart shell.



Other colors upon request*

■ Powder Coat Finishes Additional colors on feature page



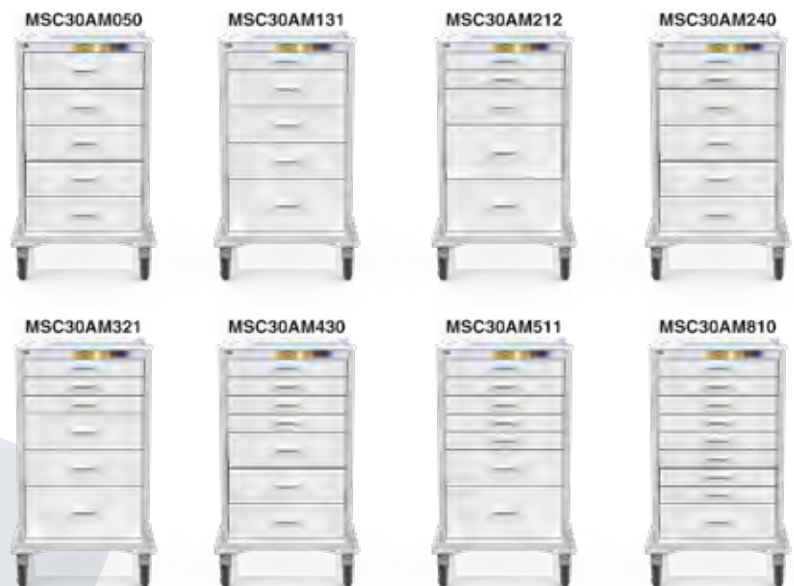
STAT CART | DRAWER CONFIGURATIONS



Each cart height offers several drawer combinations comprised of these drawer heights:

- 3"
- 6"
- 9"

***EXAMPLE BELOW SHOWING 30"H STATCART DRAWER COMBINATIONS**



PART NUMBER

MSC 21 AM XXX-01 HTI

Heights

Widths

Drawer
Config

Lock
Config

Tray
Kits

24 BM
27
30

3" 6" 9"

05
06
07
08
09
10

T2
T3

PN Example: MSC30AM321-01HT1

STAT CART | TRAY OPTIONS

SINGLE TRAY OPTION - T1



MSC500A3TRKT1

3" D

FULL SINGLE TRAY



MSC500A6TRKT1

6" D

FULL SINGLE TRAY



MSC500A9TRKT1

8" D

FULL SINGLE TRAY

SPLIT TRAY OPTION - T2



MSC500A3TRKT2

3" D

SPLIT TRAY



MSC500A6TRKT2

6" D

SPLIT TRAY

NARROW TRAY OPTION - T3



MSC500B3TRKT3

3" D

NARROW TRAY



MSC500B6TRKT3

FOR 6"/9" D

NARROW TRAY

CODE CART



PN: MSC30AM321-10HT1-COD

MSC667-IN	Standard ACCY Shelf Installed	MSC620-IN	IV Pole Installed
MSC633-IN	Flip-Up 20" Writing Surface Installed	MSC674-IN	O2 Holder Installed
MSC657-IN	Universal Side Rail (left) Installed	MSC635-IN	Suction Pump Shelf Installed
MSC619-IN	CPR Board Kit Installed	MSC691-IN	Defibrillator Shelf Installed
MSC664-IN	Rear Goal Posts Installed	MSC676-IN	Sharps Box Mount Installed
			-10 Two Gang Lock

IV START CART



PN: MSC24AM230-01HT1-IVS

MSC644-IN	4-Tilt Bin Installed	MSC622-IN	Triple Glove Box Installed
MSC620-IN	IV Pole Installed	MSC664-IN	Rear Goal Posts Installed
MSC657-IN	Univ. Side Rail (Left) Installed	MSC676-IN	Sharps Box Mount Installed
			-01 Key Lock

ANESTHESIA CART



PN: MSC27AM411-05HT1-ANE

MSC676-IN Sharps Box Mount Installed
 MSC628-IN Waste Bin Kit Installed
 MSC665-IN Rear Goal Posts Ext. Installed
 MSC644-IN 4-Tilt Bin Installed
 MSC645-IN 5-Tilt Bin Installed

MSC620-IN IV Pole Installed
 MSC633-IN Flip-Up 20" Writing Surface Installed
 MSC622-IN Triple Glove Box, Installed
 MSC657-IN Universal Side Rail
 -05 Electronic Lock

ISOLATION CART



PN:
MSC24AM311-01HT1-ISO
MSC24BM311-01HT3-ISO

MSC622-IN Triple Glove Box Installed
 MSC628-IN Waste Bin Kit Installed
 MSC690-IN Sani Wipe Mounting Kit, Installed
 -01 Key Lock

CAST CART



PN: MSC27AM221-01HT1-CAS

2x MSC667-IN
MSC628-IN
MSC665-IN
-01 Key Lock

Standard ACCY Shelf Installed
Waste Bin Kit Installed
Rear Goal Posts Ext. Installed

DIFFICULT AIRWAY



PN: MSC24AM230-01HT1-IVS

MSC628-IN
MSC665-IN
MSC644-IN

Waste Bin Kit Installed
Rear Goal Posts Ext. Installed
4-Tilt Bin Installed

MSC674-IN
MSC667-IN
-01 Key Lock

O2 Tank Holder Installed
Standard Accessory Shelf, Installed

PEDIATRIC CART



PN: MSC30AM810-08HT1-PED

MSC674-IN O2 Tank Holder Installed
 MSC691-IN Defibrillator Shelf Installed
 MSC635-IN Suction Pump Shelf Installed

MSC620-IN IV Pole Installed
 MSC619-IN CPR Board Kit
 -08 Breakaway Lock

SUTURE CART



PN: MSC27AM330-01HT1-SUT

MSC676-IN Sharps Box Mount Installed
 MSC628-IN Waste Bin Kit Installed
 MSC665-IN Rear Goal Posts Ext. Installed
 MSC687-IN x2 24"L Suture Shelf Installed

MSC657-IN Universal Side Rail, Installed
 MSC633-IN Flip-Up 20" Writing Surface Installed
 -01 Key Lock



STAT CART

WIDTH
HEIGHT
COLOR
DRAWER CONFIG
TRAY CONFIG
LOCK OPTIONS
ACCESSORIES

YOUR CART

**2X WIDTHS
4X HEIGHTS**



DRAWER COMBINATIONS

comprised of these drawer heights:

- 3"
- 6"
- 9"



*Example below showing 2 30"H
STATCART drawers combinations.

COLOR COMBINATIONS

Drawer faces can be colored separately from cart shell.

■ Powder Coat Finishes



CONFIGURE YOUR CART



PRODUCT VIDEO
**SCAN
HERE**



STAT CART | EQUIPMENT MANAGEMENT

The EVERHUTCH equipment management system provides flexibility and the opportunity to configure any cart to work in any department. Accessories can be easily removed, added or relocated to another position on the cart to increase efficiency and ergonomics. These accessories can also be moved easily from existing wall equipment rail systems to the cart and back again. This system gives healthcare workers the flexibility needed for optimum patient care.

FROM WALL TO CART



STAT CART | ACCESSORIES

TILT BINS - GREY PLASTIC BOX WITH CLEAR PLASTIC BINS



MSC643

9.25"H x 23.625"W x 6.25"D

3 Bin



MSC644

8.125"H x 23.625"W x 5.375"D

4 Bin



MSC645

6.5"H x 23.625"W x 4.25"D

5 Bin



MSC673

4.5"H x 23.625"W x 3.625"D

6 Bin

BASKETS- POWDER COATED METAL



MSC646

4.25"H x 10"W x 7"D

SMALL BASKET



MSC647

4"H x 18"W x 10"D

LARGE BASKET



MSC648

4.75"H x 5.375"D

UTENCIL CUP

HOOKS - & INTEGRATED MOUNTING PLATE



MSC679

2.5"H x 1.5"W x 2"D

1 HOOK 2"



MSC680

2.5"H x 1.5"W x 4"D

1 HOOK 4"



MSC681

2.5"H x 12"W x 2"D

2 HOOK 2"



MSC682

2.5"H x 12"W x 2"D

2 HOOK 4"

STAT CART | ACCESSORIES

MONITOR MOUNTING AND CABLE MANAGEMENT



MSC634
6"H x 4"W x 8.5"D
GCX STYLE SWING ARM
(GCX NOT INCLUDED)



MSC637
27"H x 4"W x 21.5"D
MOUNTING ARM ONLY
(MONITOR NOT INCLUDED)

MSC671
27"H x 11"W x 32"D
**ARM & LAPTOP
HOLDER**



MSC684
7.75"H x 1.5"W x 1.5"D
CORD CLEAT



MSC672
3.5"H x 1.5"W x 0.75"D
CORD BUNDLER

WASTE MANAGEMENT



MSC628
3"H x 21"W x 1"D
**12QT WASTE BIN
RAIL MOUNT KIT**
(TRASH CAN INCLUDED)



MSC676
5"H x 5"W x 1"D
**LOCKING MOUNT FOR
DANIELS SHARPS BOX**
(SHARPS BOX NOT INCLUDED)



MSC675
5"H x 5"W x 1"D
**NON-LOCKING MOUNT FOR
UNIVERSAL SHARPS BOX**
(SHARPS BOX NOT INCLUDED)

KENDALL
COVIDIEN
BEMIS SHARPS

STAT CART

ACCESSORIES

SHELVES - FIXED AND FOLDING



MSC632

18"H x 5"W x 10"D

FLIP-UP SURFACE 15" SIDE MOUNTED

Scratch resistant food grade high density polyethylene.
Indented spill lip. Up to 100lb load capacity.



MSC633

13"H x 20"W x 16"D

FLIP-UP SURFACE 20" REAR MOUNTED

Scratch resistant food grade high density polyethylene.
Indented spill lip. Up to 100lb load capacity.



MSC630

3"H x 11"W x 9.5"D

10" FIXED WRITING SURFACE WITH LIP EDGES



MSC631

3"H x 11"W x 14"D

14" FIXED WRITING SURFACE WITH LIP EDGES



MSC667 8.5"Deep

MSC667D 11"Deep

5.125"H x 23.7"W

STANDARD WIDTH ACCESSORIES SHELF

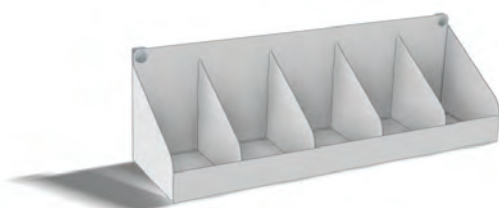


MSC668 8.5"Deep

MSC668D 11"Deep

5.125"H x 18.2"W

NARROW WIDTH ACCESSORIES SHELF



MSC687 Suture Shelf, **Standard 24"L**

MSC688 Suture Shelf, **Slim 18"L**

MSC689 Suture Shelf, **Side Mounted, 20"L**

STAT CART | ACCESSORIES

RAILS



MSC657

21.5"

UNIVERSAL SIDE RAIL



MSC658

23.5"

**STANDARD WIDTH
REAR RAIL**



MSC659

18"

**NARROW WIDTH
REAR RAIL**



MSC619

23"H x 18"W x 1"D

CPR BOARD & BRACKET



MSC655

23.5"W

**REAR ACCESSORY RAIL KIT
STANDARD WIDTH**



MSC656

18"W

**REAR ACCESSORY RAIL KIT
NARROW WIDTH**



MSC670

19"H x 9.125"W x 4.7"D

Catheter Storage Box



MSC664

24"H

STANDARD HEIGHT



MSC665

38"H

EXTENDED HEIGHT

STAT CART | ACCESSORIES

MISCELLANEOUS ACCESSORIES



MSC636

7.75"H x 9.625"W x 3.75"D
CHART HOLDER



MSC653

9"H x 2.5"W x 1.75"D
**4 OUTLET
POWER STRIP**



MSC691

19"H x 14.7"W x 14.7"D
**DEFIBRILLATOR
SHELF**



MSC606

.75"H x 26.8"W x 23"D
STANDARD TOP



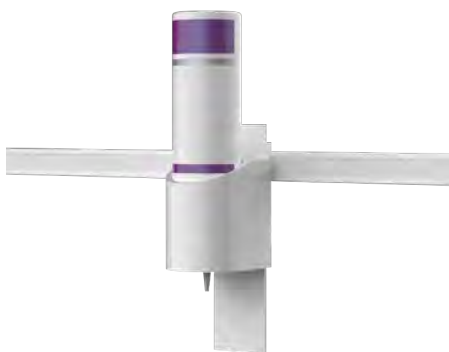
MSC686

3.2"H x 12.5"W x 5"D
ANES Label Holder



MSC690

CaviWipes Bracket



MSC639

7"H x 2.5"W x 1"D
**FOAM DISPENSER
& BRACKET**



MSC663

2.5"H x 1.5"W x .75"D
RAIL BRACKET



MSC618

3"H x 22.25"W x 3"D
SIDE HANDLE

STAT CART | ACCESSORIES

GLOVE BOX HOLDER - POWDER COATED METAL



MSC625
9.5"H x 16.75"W x 4.5"D
TRIPLE GLOVE BOX

MEDICAL GAS



MSC674
16"H x 5.5"W x 5.5"D
OXYGEN HOLDER



MSC635
10.125"H x 20.9"W x 8.5"D
SUCTION PUMP SHELF KIT
(PUMP NOT INCLUDED)

STAT CART | ACCESSORIES

INFUSION MANAGEMENT



MSC620
ADJ"H x 12" pole x 2"D
IV POLE



MSC624
1"D x 4"H ON 5' AMF POST
C-CLAMP POLE MOUNT



STATESVILLE, NC

WWW.EVERHUTCH.COM

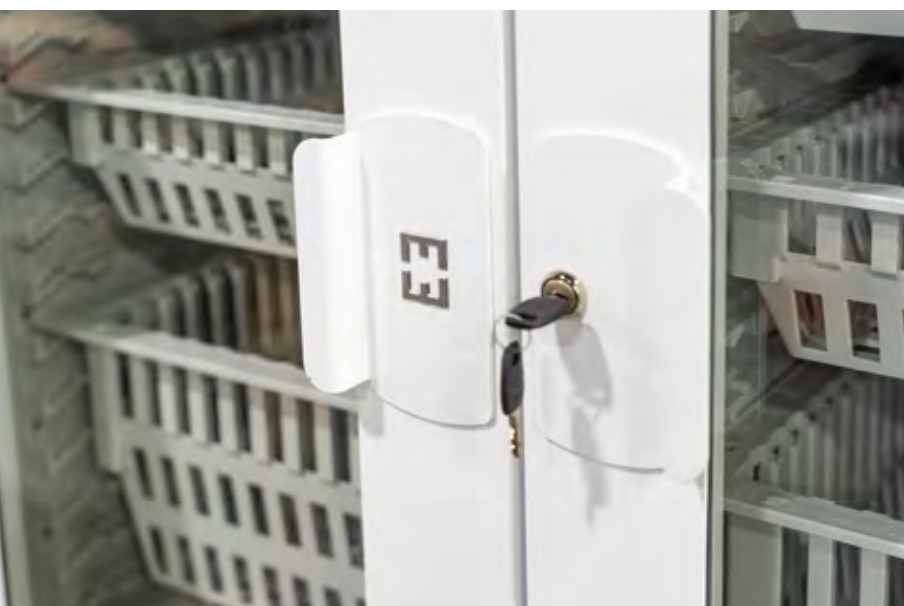
CORE CART

The cell storage system was specifically designed for use in the healthcare industry. This high-quality logistic system is ISO 3394 standardized and can be used in all departments of the hospital. Because of the adaptability of its components, this system allows customers to find the optimal solution that answers to their specific needs while saving up to 30% of space in comparison to more traditional shelving systems.

Available with multiple lock options, including keyed lock, electronic keypad, and electronic keypad with proximity card reader (two frequencies).

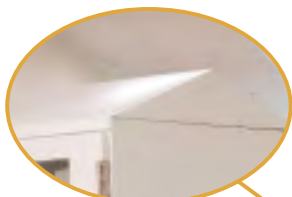
The cart is on four swivel locking casters for ease of movement and designed in a powder coated steel for efficient cleaning, and includes two side handles for easy maneuverability.

- Available heights 76"
- Key lock options
- Tempered glass doors



CORE CART

PRODUCT VIDEO
**SCAN
HERE**



Sloped Tops



Catheter Racks



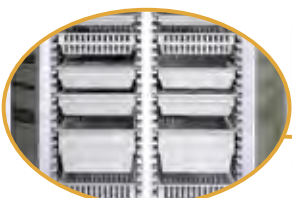
20ga Cold-Rolled Steel
Construction



Multi-Angle Trays, Shelves,
and Baskets



Keyed and Electronic Locks



Multiple Depths of Trays
and Baskets



Push Handles



Easy to Clean, Locking
Casters



Interior Dividers Allow For Multiple
Storage Configurations

PART NUMBER

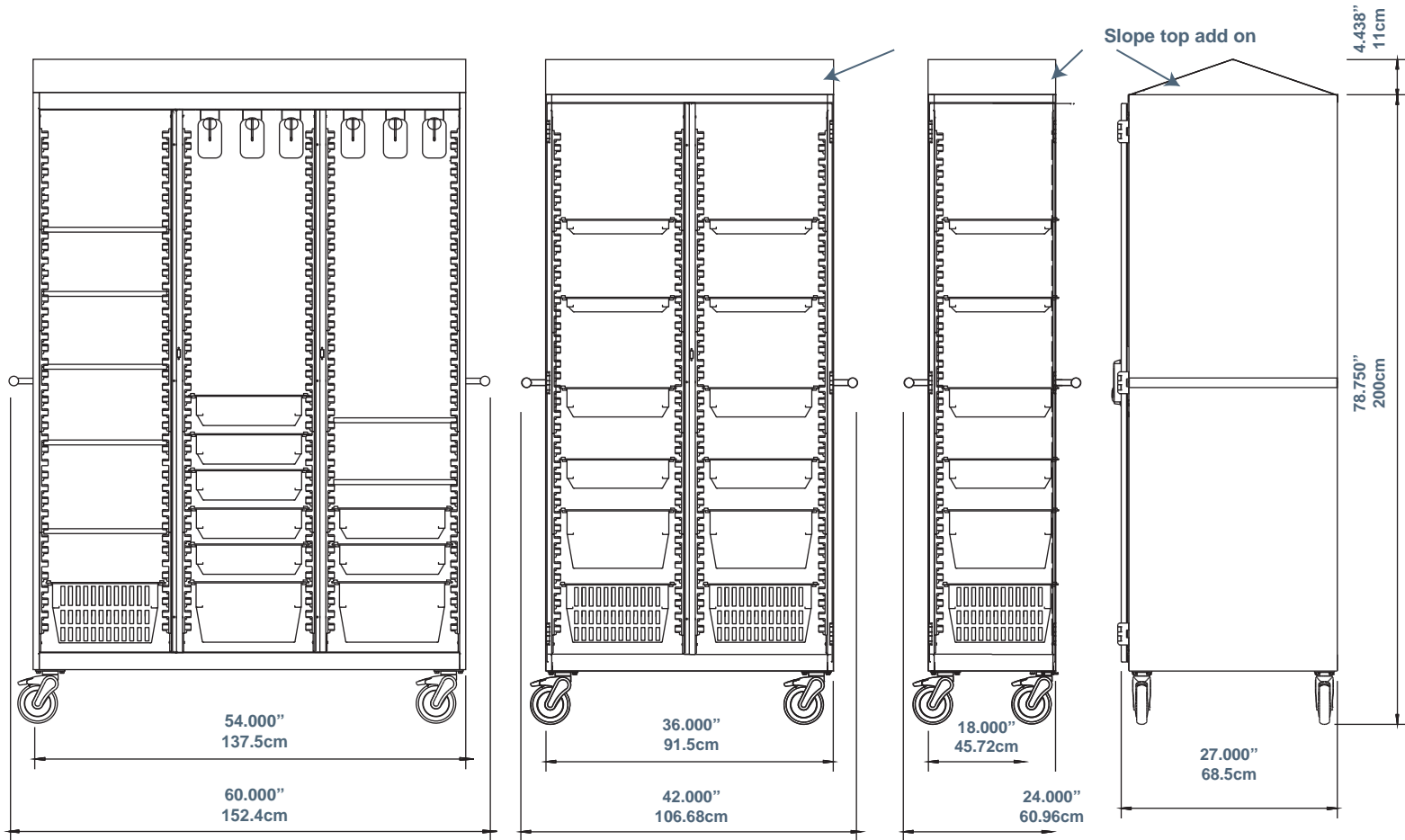
MCT **-** **G2N**
Bay Divider Lock option Package option

PN Example: MCT302-XX-G3C

- Height: 78.75" x Depth: 27"
- Caster Wheel 5"
- Conforms to UL 60601
- Shell 18 Gauge steel double sided construction

CORE | SPECIFICATION

CART



KEY BENEFITS

Maneuvers easily

- Customized solutions for Cath labs, IR labs, OR, Endo/ bronch and General Storage.
- Robust design
- Conforms to UL 60601
- 5" Locking swivel casters

Customizable

- 21 Accessory packages available
- 29 Individual accessories available

Adaptable to your workflow

- Adaptable as needs change with various accessory packages
- Interchangeable components with EVERHUTCH solutions
- Accommodates variety of medical equipment
- Configure your own custom CORE Cart

SPECIFICATIONS

- Height: 78.75"x Width: 36" x Depth: 27"
- Weight: 275 LB (2 Bay)
- Caster Wheel 5"

Certifications

- Conforms to UL 60601

Finish

- Snow White Powder Coat

Door Handles

- Brushed Stainless Steel

Side Handles

- Brushed Aluminum

Warranty

Refer to **EVERHUTCH.com** for complete warranty information.

CORE CART

PROCEDURE CART



3BAY

2BAY



1BAY



CORE | MAXIMIZE STORAGE CART



CHOOSE YOUR HANDLE OPTIONS



WITH HANDLES 42"

$41" \times 5 = 205"$



NO HANDLES 38"

$36" \times 5 = 175"$

30" SPACE SAVING
5 x 2bay CORE CARTS

CORE CABINET



PART NUMBER

MCC

Bay configuration

100 = 1Bay
200 = 2Bay NO Div
201 = 2Bay CTR Div
202 = 2Bay Split Div
300 = 3bay 2 Div
301 = 3bay LH Div
302 = 3bay RH Div

Door opening

L= Left Door
R = Right Door

Lock option

0 = No Lock
1 = Key Lock
2 = Key Pad
3 = Prox Low Frequency
4 = Prox High Frequency

PN Example: MCC100-R0
1 BAY, CORE CABINET, RH DR, NO. LK,
Accessories not included*



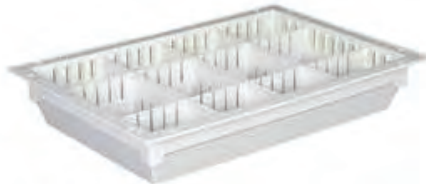
4X PN Example: MCC201-02
2 BAY, CORE CABINET, RH DR, E KP LK

2" Tray & Dividers - Light Grey



Part Number	Description
MCT601	2" Light Gray Tray
MCT606	Light Gray Divider 2"x16"
MCT607	Light Gray Divider 2"x24"

4" Tray & Dividers - Light Grey



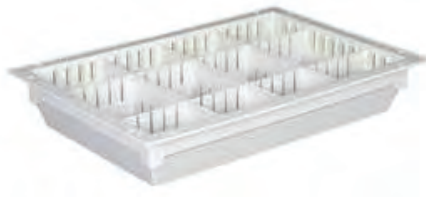
Part Number	Description
MCT602	4" Light Gray Tray
MCT610	Light Gray Divider 4"x16"
MCT611	Light Gray Divider 4"x24"

8" Tray & Dividers - Light Grey



Part Number	Description
MCT603	8" Light Gray Tray
MCT612	Light Gray Divider 8"x16"
MCT613	Light Gray Divider 8"x24"

4" Basket & Dividers - Light Grey



Part Number	Description
MCT604	4" Light Gray Tray
MCT610	Light Gray Divider 4"x16"
MCT611	Light Gray Divider 4"x24"

8" Basket & Dividers - Light Grey

Part Number	Description
MCT605	8" Light Gray Tray
MCT612	Light Gray Divider 8"x16"
MCT613	Light Gray Divider 8"x24"

Tray Stop System

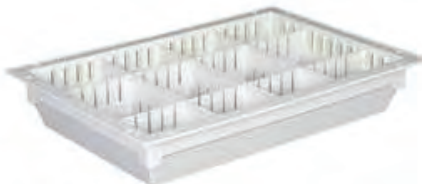


Part Number	Description
MCT614	Tray Stop System

TRAYS AND BASKETS



MCT601
Light Gray
2" Tray



MCT602
Light Gray
4" Tray



MCT603
Light Gray
8" Tray



MCT604
Light Gray
4" Basket



MCT605
Light Gray
8" Basket



MCT606 2"H x 16"W

2" Divider



MCT607 2"H x 24"W

2" Divider

MCT610 4"H x 16"W

4" Divider

MCT611 4"H x 24"W

4" Divider

MCT612 8"H x 16"W

8" Divider

MCT613 8"H x 24"W

8" Divider



MCT615
Label Holder



MCT616
White Label
Card for
Holder



MCT614
Tray Stop

SHELVES AND RACKS



MCT617
9 Hooks
Cath Manager



MCT624
(Shelf not included)
**Under Shelf
Cath Manager**



MCT618
MCT619
MCT619-HD
MCT622

24.125"D x 18"W **1 Bay Metal Shelf**
24.125"D x 36"W **2 Bay Metal Shelf**
24.125"D x 36"W **2 Bay Heavy Duty
Shelf Dividers**

LOCK OPTIONS



MCT523 Keyless Electronic Keypad
MCT524 Keyless Electronic Keypad Proximity Card HID Access
MCT525 Keyless Electronic Keypad Iclass HID Access High FEQ

MCT522
Inc 2 Keys
Disk Lock



SLOPE TOP



2 Sided



1 Sided

MCT625

Cart Sloped Top

1 Bay 2 Sided

MCT620

Cart Sloped Top

2 Bay 2 Sided

MCT621

Cart Sloped Top

3 Bay 2 Sided

MCC626

Cabinet Sloped Top

1 Bay 1 Sided

MCC627

Cabinet Sloped Top

2 Bay 1 Sided

MCC628

Cabinet Sloped Top

3 Bay 1 Sided

SIDE ACCESSORIES



MCT628
72"H
Vertical Rail Kit
Pair

- Same corner extrusions as STAT Cart
- Extended length equipment rail
- Compatible with all STAT accessories that use Fairfield rail



MCT627
26.25"W
Side Accessory
Rail Kit



MCT629
26.185"W
Side Handle

Compatible with STAT CART Accessories

3 BAY

MCT300-xx-xxxxx



MCT301-xx-xxxxx



MCT302-xx-xxxxx



MCT301-xx-xxC3A



PART #	QTY	DESCRIPTION
MCT601-KT	2	Tray 2" Light Gray - Loaded w/Dividers
MCT602-KT	2	Tray 4" Light Gray - Loaded w/Dividers
MCT603-KT	1	Tray 8" Light Gray - Loaded w/Dividers
MCT604-KT	-	Basket 4" Light Gray - Loaded w/Dividers
MCT605-KT	1	Basket 8" Light Gray - Loaded w/Dividers
MCT617	7	Upper Cath Manager
MCT618	1	18" Metal Shelf
MCT619	-	36" Metal Shelf
MCT615	6	Plastic Label Holder
MCT616	6	Label Card

MCT302-xx-xxC3A



MCT301-xx-xxC3B



PART #	QTY	DESCRIPTION
MCT601-KT	-	Tray 2" Light Gray - Loaded w/Dividers
MCT602-KT	-	Tray 4" Light Gray - Loaded w/Dividers
MCT603-KT	-	Tray 8" Light Gray - Loaded w/Dividers
MCT604-KT	-	Basket 4" Light Gray - Loaded w/Dividers
MCT605-KT	-	Basket 8" Light Gray - Loaded w/Dividers
MCT617	7	Upper Cath Manager
MCT618	4	18" Metal Shelf
MCT619	-	36" Metal Shelf
MCT615	-	Plastic Label Holder
MCT616	-	Label Card

MCT302-xx-xxC3B



MCT301-xx-xxC3C



PART #	QTY	DESCRIPTION
MCT601-KT	1	Tray 2" Light Gray - Loaded w/Dividers
MCT602-KT	2	Tray 4" Light Gray - Loaded w/Dividers
MCT603-KT	-	Tray 8" Light Gray - Loaded w/Dividers
MCT604-KT	-	Basket 4" Light Gray - Loaded w/Dividers
MCT605-KT	1	Basket 8" Light Gray - Loaded w/Dividers
MCT617	7	Upper Cath Manager
MCT618	2	18" Metal Shelf
MCT619	-	36" Metal Shelf
MCT615	4	Plastic Label Holder
MCT616	4	Label Card

MCT302-xx-xxC3C





PART #	QTY	DESCRIPTION
MCT601-KT	-	Tray 2" Light Gray - Loaded w/Dividers
MCT602-KT	-	Tray 4" Light Gray - Loaded w/Dividers
MCT603-KT	-	Tray 8" Light Gray - Loaded w/Dividers
MCT604-KT	-	Basket 4" Light Gray - Loaded w/Dividers
MCT605-KT	-	Basket 8" Light Gray - Loaded w/Dividers
MCT617	9	Upper Cath Manager
MCT618	-	18" Metal Shelf
MCT619	-	36" Metal Shelf
MCT615	-	Plastic Label Holder
MCT616	-	Label Card



PART #	QTY	DESCRIPTION
MCT601-KT	1	Tray 2" Light Gray - Loaded w/Dividers
MCT602-KT	5	Tray 4" Light Gray - Loaded w/Dividers
MCT603-KT	4	Tray 8" Light Gray - Loaded w/Dividers
MCT604-KT	-	Basket 4" Light Gray - Loaded w/Dividers
MCT605-KT	-	Basket 8" Light Gray - Loaded w/Dividers
MCT617	6	Upper Cath Manager
MCT618	1	18" Metal Shelf
MCT619	-	36" Metal Shelf
MCT615	10	Plastic Label Holder
MCT616	10	Label Card



PART #	QTY	DESCRIPTION
MCT601-KT	-	Tray 2" Light Gray - Loaded w/Dividers
MCT602-KT	7	Tray 4" Light Gray - Loaded w/Dividers
MCT603-KT	2	Tray 8" Light Gray - Loaded w/Dividers
MCT604-KT	-	Basket 4" Light Gray - Loaded w/Dividers
MCT605-KT	1	Basket 8" Light Gray - Loaded w/Dividers
MCT617	6	Upper Cath Manager
MCT618	7	18" Metal Shelf
MCT619	-	36" Metal Shelf
MCT615	10	Plastic Label Holder
MCT616	10	Label Card



PART #	QTY	DESCRIPTION
MCT601-KT	3	Tray 2" Light Gray - Loaded w/Dividers
MCT602-KT	4	Tray 4" Light Gray - Loaded w/Dividers
MCT603-KT	3	Tray 8" Light Gray - Loaded w/Dividers
MCT604-KT	2	Basket 4" Light Gray - Loaded w/Dividers
MCT605-KT	3	Basket 8" Light Gray - Loaded w/Dividers
MCT617	-	Upper Cath Manager
MCT618	4	18" Metal Shelf
MCT619	-	36" Metal Shelf
MCT615	15	Plastic Label Holder
MCT616	15	Label Card



PART #	QTY	DESCRIPTION
MCT601-KT	1	Tray 2" Light Gray - Loaded w/Dividers
MCT602-KT	3	Tray 4" Light Gray - Loaded w/Dividers
MCT603-KT	-	Tray 8" Light Gray - Loaded w/Dividers
MCT604-KT	3	Basket 4" Light Gray - Loaded w/Dividers
MCT605-KT	-	Basket 8" Light Gray - Loaded w/Dividers
MCT617	-	Upper Cath Manager
MCT618	6	18" Metal Shelf
MCT619	-	36" Metal Shelf
MCT615	7	Plastic Label Holder
MCT616	7	Label Card



PART #	QTY	DESCRIPTION
MCT601-KT	1	Tray 2" Light Gray - Loaded w/Dividers
MCT602-KT	3	Tray 4" Light Gray - Loaded w/Dividers
MCT603-KT	1	Tray 8" Light Gray - Loaded w/Dividers
MCT604-KT	-	Basket 4" Light Gray - Loaded w/Dividers
MCT605-KT	1	Basket 8" Light Gray - Loaded w/Dividers
MCT617	-	Upper Cath Manager
MCT618	1	18" Metal Shelf
MCT619	5	36" Metal Shelf
MCT615	6	Plastic Label Holder
MCT616	6	Label Card





PART #	QTY	DESCRIPTION
MCT601-KT	2	Tray 2" Light Gray - Loaded w/Dividers
MCT602-KT	4	Tray 4" Light Gray - Loaded w/Dividers
MCT603-KT	1	Tray 8" Light Gray - Loaded w/Dividers
MCT604-KT	-	Basket 4" Light Gray - Loaded w/Dividers
MCT605-KT	-	Basket 8" Light Gray - Loaded w/Dividers
MCT617	-	Upper Cath Manager
MCT618	1	18" Metal Shelf
MCT619	-	36" Metal Shelf
MCT615	7	Plastic Label Holder
MCT616	7	Label Card



PART #	QTY	DESCRIPTION
MCT601-KT	6	Tray 2" Light Gray - Loaded w/Dividers
MCT602-KT	-	Tray 4" Light Gray - Loaded w/Dividers
MCT603-KT	-	Tray 8" Light Gray - Loaded w/Dividers
MCT604-KT	12	Basket 4" Light Gray - Loaded w/Dividers
MCT605-KT	6	Basket 8" Light Gray - Loaded w/Dividers
MCT617	-	Upper Cath Manager
MCT618	3	18" Metal Shelf
MCT619	-	36" Metal Shelf
MCT615	30	Plastic Label Holder
MCT616	30	Label Card



PART #	QTY	DESCRIPTION
MCT601-KT	6	Tray 2" Light Gray - Loaded w/Dividers
MCT602-KT	15	Tray 4" Light Gray - Loaded w/Dividers
MCT603-KT	6	Tray 8" Light Gray - Loaded w/Dividers
MCT604-KT	-	Basket 4" Light Gray - Loaded w/Dividers
MCT605-KT	-	Basket 8" Light Gray - Loaded w/Dividers
MCT617	-	Upper Cath Manager
MCT618	3	18" Metal Shelf
MCT619	-	36" Metal Shelf
MCT615	27	Plastic Label Holder
MCT616	27	Label Card



PART #	QTY	DESCRIPTION
MCT601-KT	2	Tray 2" Light Gray - Loaded w/Dividers
MCT602-KT	8	Tray 4" Light Gray - Loaded w/Dividers
MCT603-KT	4	Tray 8" Light Gray - Loaded w/Dividers
MCT604-KT	-	Basket 4" Light Gray - Loaded w/Dividers
MCT605-KT	-	Basket 8" Light Gray - Loaded w/Dividers
MCT617	-	Upper Cath Manager
MCT618	8	18" Metal Shelf
MCT619	-	36" Metal Shelf
MCT615	14	Plastic Label Holder
MCT616	14	Label Card



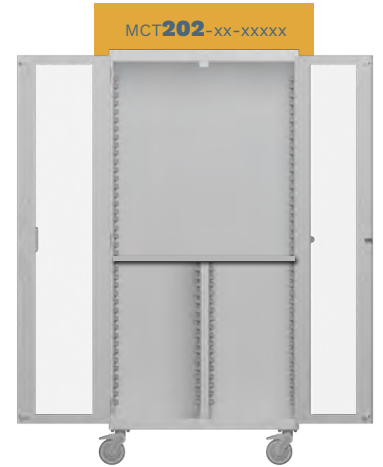
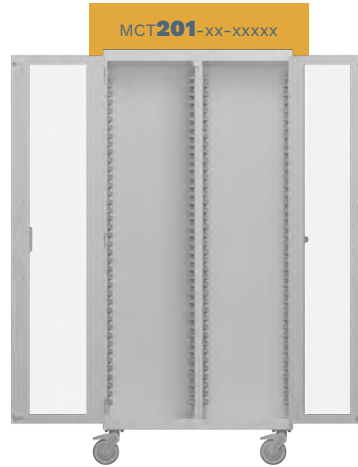
PART #	QTY	DESCRIPTION
MCT601-KT	-	Tray 2" Light Gray - Loaded w/Dividers
MCT602-KT	-	Tray 4" Light Gray - Loaded w/Dividers
MCT603-KT	-	Tray 8" Light Gray - Loaded w/Dividers
MCT604-KT	-	Basket 4" Light Gray - Loaded w/Dividers
MCT605-KT	-	Basket 8" Light Gray - Loaded w/Dividers
MCT617	-	Upper Cath Manager
MCT618	15	18" Metal Shelf
MCT619	-	36" Metal Shelf
MCT615	-	Plastic Label Holder
MCT616	-	Label Card



PART #	QTY	DESCRIPTION
MCT601-KT	-	Tray 2" Light Gray - Loaded w/Dividers
MCT602-KT	-	Tray 4" Light Gray - Loaded w/Dividers
MCT603-KT	-	Tray 8" Light Gray - Loaded w/Dividers
MCT604-KT	-	Basket 4" Light Gray - Loaded w/Dividers
MCT605-KT	-	Basket 8" Light Gray - Loaded w/Dividers
MCT617	-	Upper Cath Manager
MCT618	5	18" Metal Shelf
MCT619	5	36" Metal Shelf
MCT615	-	Plastic Label Holder
MCT616	-	Label Card



2 BAY



PART #	QTY	DESCRIPTION
MCT601-KT	4	Tray 2" Light Gray - Loaded w/Dividers
MCT602-KT	4	Tray 4" Light Gray - Loaded w/Dividers
MCT603-KT	2	Tray 8" Light Gray - Loaded w/Dividers
MCT604-KT	-	Basket 4" Light Gray - Loaded w/Dividers
MCT605-KT	2	Basket 8" Light Gray - Loaded w/Dividers
MCT617	-	Upper Cath Manager
MCT618	-	18" Metal Shelf
MCT619	-	36" Metal Shelf
MCT615	12	Plastic Label Holder
MCT616	12	Label Card



PART #	QTY	DESCRIPTION
MCT601-KT	3	Tray 2" Light Gray - Loaded w/Dividers
MCT602-KT	3	Tray 4" Light Gray - Loaded w/Dividers
MCT603-KT	-	Tray 8" Light Gray - Loaded w/Dividers
MCT604-KT	2	Basket 4" Light Gray - Loaded w/Dividers
MCT605-KT	2	Basket 8" Light Gray - Loaded w/Dividers
MCT617	-	Upper Cath Manager
MCT618	3	18" Metal Shelf
MCT619	-	36" Metal Shelf
MCT615	10	Plastic Label Holder
MCT616	10	Label Card



PART #	QTY	DESCRIPTION
MCT601-KT	3	Tray 2" Light Gray - Loaded w/Dividers
MCT602-KT	4	Tray 4" Light Gray - Loaded w/Dividers
MCT603-KT	-	Tray 8" Light Gray - Loaded w/Dividers
MCT604-KT	1	Basket 4" Light Gray - Loaded w/Dividers
MCT605-KT	1	Basket 8" Light Gray - Loaded w/Dividers
MCT617	-	Upper Cath Manager
MCT618	2	18" Metal Shelf
MCT619	-	36" Metal Shelf
MCT615	9	Plastic Label Holder
MCT616	9	Label Card



PART #	QTY	DESCRIPTION
MCT601-KT	4	Tray 2" Light Gray - Loaded w/Dividers
MCT602-KT	4	Tray 4" Light Gray - Loaded w/Dividers
MCT603-KT	-	Tray 8" Light Gray - Loaded w/Dividers
MCT604-KT	2	Basket 4" Light Gray - Loaded w/Dividers
MCT605-KT	2	Basket 8" Light Gray - Loaded w/Dividers
MCT617	-	Upper Cath Manager
MCT618	2	18" Metal Shelf
MCT619	-	36" Metal Shelf
MCT615	12	Plastic Label Holder
MCT616	12	Label Card



PART #	QTY	DESCRIPTION
MCT601-KT	2	Tray 2" Light Gray - Loaded w/Dividers
MCT602-KT	4	Tray 4" Light Gray - Loaded w/Dividers
MCT603-KT	2	Tray 8" Light Gray - Loaded w/Dividers
MCT604-KT	4	Basket 4" Light Gray - Loaded w/Dividers
MCT605-KT	2	Basket 8" Light Gray - Loaded w/Dividers
MCT617	-	Upper Cath Manager
MCT618	8	18" Metal Shelf
MCT619	-	36" Metal Shelf
MCT615	14	Plastic Label Holder
MCT616	14	Label Card



PART #	QTY	DESCRIPTION
MCT601-KT	4	Tray 2" Light Gray - Loaded w/Dividers
MCT602-KT	6	Tray 4" Light Gray - Loaded w/Dividers
MCT603-KT	-	Tray 8" Light Gray - Loaded w/Dividers
MCT604-KT	1	Basket 4" Light Gray - Loaded w/Dividers
MCT605-KT	1	Basket 8" Light Gray - Loaded w/Dividers
MCT617	6	Upper Cath Manager
MCT618	4	18" Metal Shelf
MCT619	-	36" Metal Shelf
MCT615	12	Plastic Label Holder
MCT616	12	Label Card



PART #	QTY	DESCRIPTION
MCT601-KT	-	Tray 2' Light Gray - Loaded w/Dividers
MCT602-KT	-	Tray 4' Light Gray - Loaded w/Dividers
MCT603-KT	-	Tray 8' Light Gray - Loaded w/Dividers
MCT604-KT	4	Basket 4' Light Gray - Loaded w/Dividers
MCT605-KT	6	Basket 8' Light Gray - Loaded w/Dividers
MCT617	-	Upper Cath Manager
MCT618	6	18" Metal Shelf
MCT619	-	36" Metal Shelf
MCT615	10	Plastic Label Holder
MCT616	10	Label Card



PART #	QTY	DESCRIPTION
MC1B01-KT	4	Tray 2" Light Gray - Loaded w/Dividers
MC1B02-KT	6	Tray 4" Light Gray - Loaded w/Dividers
MC1B03-KT	4	Tray 8" Light Gray - Loaded w/Dividers
MC1B04-KT		Basket 4" Light Gray - Loaded w/Dividers
MC1B05-KT		Basket 8" Light Gray - Loaded w/Dividers
MC1B17		Upper Cath Manager
MC1B18	2	18" Metal Shelf
MC1B19		36" Metal Shelf
MC1B15	14	Plastic Label Holder
MC1B16	14	Label Card



PART #	QTY	DESCRIPTION
MCTB01-KT	4	Tray 2' Light Gray - Loaded w/Dividers
MCTB02-KT	12	Tray 4' Light Gray - Loaded w/Dividers
MCTB03-KT	2	Tray 8' Light Gray - Loaded w/Dividers
MCTB04-KT	-	Basket 4' Light Gray - Loaded w/Dividers
MCTB05-KT	-	Basket 8' Light Gray - Loaded w/Dividers
MCTB17	-	Upper Cath Manager
MCTB18	2	18" Metal Shelf
MCTB19	-	36" Metal Shelf
MCTB15	18	Plastic Label Holder
MCTB16	18	Label Card



PART #	QTY	DESCRIPTION
MC1B01-KT	6	Tray 2" Light Gray - Loaded w/Dividers
MC1B02-KT	8	Tray 4" Light Gray - Loaded w/Dividers
MC1B03-KT	2	Tray 8" Light Gray - Loaded w/Dividers
MC1B04-KT		Basket 4" Light Gray - Loaded w/Dividers
MC1B05-KT		Basket 8" Light Gray - Loaded w/Dividers
MC1B17		Upper Cath Manager
MC1B18	6	18" Metal Shelf
MC1B19		36" Metal Shelf
MC1B15	16	Plastic Label Holder
MC1B16	16	Label Card



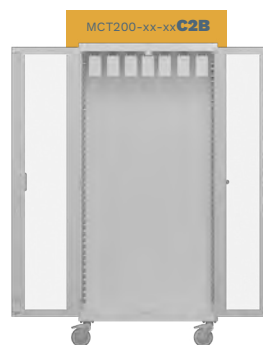
PART #	QTY	DESCRIPTION
MCT601-KT	2	Tray 2" Light Gray - Loaded w/Dividers
MCT602-KT	2	Tray 4" Light Gray - Loaded w/Dividers
MCT603-KT	1	Tray 8" Light Gray - Loaded w/Dividers
MCT604-KT	2	Basket 4" Light Gray - Loaded w/Dividers
MCT605-KT	2	Basket 8" Light Gray - Loaded w/Dividers
MCT617		- Upper Cath Manager
MCT618	14	18" Metal Shelf
MCT619		- 36" Metal Shelf
MCT615	10	Plastic Label Holder
MCT616	10	Label Card



PART #	QTY	DESCRIPTION
MC1B01-KT	2	Tray 2" Light Gray - Loaded w/Dividers
MC1B02-KT	8	Tray 4" Light Gray - Loaded w/Dividers
MC1B03-KT	2	Tray 8" Light Gray - Loaded w/Dividers
MC1B04-KT		Basket 4" Light Gray - Loaded w/Dividers
MC1B05-KT		Basket 8" Light Gray - Loaded w/Dividers
MC1B17		Upper Cath Manager
MC1B18		2 18" Metal Shelf
MC1B19		36" Metal Shelf
MC1B15	12	Plastic Label Holder
MC1B16	12	Label Card



PART #	QTY	DESCRIPTION
MCTB01-KT	1	Tray 2" Light Gray - Loaded w/Dividers
MCTB02-KT	1	Tray 4" Light Gray - Loaded w/Dividers
MCTB03-KT	1	Tray 8" Light Gray - Loaded w/Dividers
MCTB04-KT	-	Basket 4" Light Gray - Loaded w/Dividers
MCTB05-KT	-	Basket 8" Light Gray - Loaded w/Dividers
MCTB17	6	Upper Cath Manager
MCTB18	-	18" Metal Shelf
MCTB19	-	36" Metal Shelf
MCTB15	3	Plastic Label Holder
MCTB16	3	Label Card



PART #	QTY	DESCRIPTION
MCT601-KT		- Tray 2" Light Gray - Loaded w/Dividers
MCT602-KT		- Tray 4" Light Gray - Loaded w/Dividers
MCT603-KT		- Tray 8" Light Gray - Loaded w/Dividers
MCT604-KT		- Basket 4" Light Gray - Loaded w/Dividers
MCT605-KT		- Basket 8" Light Gray - Loaded w/Dividers
MCT617	7	Upper Cath Manager
MCT618		- 18" Metal Shelf
MCT619		- 36" Metal Shelf
MCT615		- Plastic Label Holder
MCT616		- Label Card



Part #	Qty	Description
MCT601-KT	1	Tray 2" Light Gray - Loaded w/Dividers
MCT602-KT	1	Tray 4" Light Gray - Loaded w/Dividers
MCT603-KT	2	Tray 8" Light Gray - Loaded w/Dividers
MCT604-KT	1	Basket 4" Light Gray - Loaded w/Dividers
MCT605-KT	1	Basket 8" Light Gray - Loaded w/Dividers
MCT617	3	Upper Cath Manager
MCT618	6	18" Metal Shelf
MCT619	-	36" Metal Shelf
MCT615	3	Plastic Label Holder
MCT616	3	Label Card



PART #	QTY	DESCRIPTION
MC1601-KT	1	Tray 2" Light Gray - Loaded w/Dividers
MC1602-KT	2	Tray 4" Light Gray - Loaded w/Dividers
MC1603-KT		Tray 8" Light Gray - Loaded w/Dividers
MC1604-KT		Basket 4" Light Gray - Loaded w/Dividers
MC1605-KT	2	Basket 8" Light Gray - Loaded w/Dividers
MC1617	3	Upper Cath Manager
MC1618	4	18" Metal Shelf
MC1619	5	36" Metal Shelf
MC1615	5	Plastic Label Holder
MC1616	5	Label Card



PART #	QTY	DESCRIPTION
MCT601-KT	-	Tray 2" Light Gray - Loaded w/Dividers
MCT602-KT	-	Tray 4" Light Gray - Loaded w/Dividers
MCT603-KT	-	Tray 8" Light Gray - Loaded w/Dividers
MCT604-KT	-	Basket 4" Light Gray - Loaded w/Dividers
MCT605-KT	-	Basket 8" Light Gray - Loaded w/Dividers
MCT617	-	Upper Cath Manager
MCT618	10	18" Metal Shelf
MCT619	-	36" Metal Shelf
MCT615	-	Plastic Label Holder
MCT616	-	Label Card



PART #	QTY	DESCRIPTION
MCT601-KT	-	Tray 2" Light Gray - Loaded w/Dividers
MCT602-KT	-	Tray 4" Light Gray - Loaded w/Dividers
MCT603-KT	-	Tray 8" Light Gray - Loaded w/Dividers
MCT604-KT	-	Basket 4" Light Gray - Loaded w/Dividers
MCT605-KT	-	Basket 8" Light Gray - Loaded w/Dividers
MCT617	-	Upper Cath Manager
MCT618	-	18" Metal Shelf
MCT619	5	36" Metal Shelf
MCT615	-	Plastic Label Holder
MCT616	-	Label Card



PART #	QTY	DESCRIPTION
MCT601-KT	-	Tray 2" Light Gray - Loaded w/Dividers
MCT602-KT	-	Tray 4" Light Gray - Loaded w/Dividers
MCT603-KT	-	Tray 8" Light Gray - Loaded w/Dividers
MCT604-KT	-	Basket 4" Light Gray - Loaded w/Dividers
MCT605-KT	-	Basket 8" Light Gray - Loaded w/Dividers
MCT617	-	Upper Cath Manager
MCT618	-	18" Metal Shelf
MCT619	8	36" Metal Shelf
MCT615	-	Plastic Label Holder
MCT616	-	Label Card

1 BAY



MCT100-R0-H
Accessories not included

PART NUMBER

MCT100-

cc = Cabinet

Door opening

L = Left Door
R = Right Door

Lock option

0 = No Lock
1 = Key Lock
2 = Key Pad
3 = Prox Low Frequency
4 = Prox High Frequency

Handle option

HL = Left Handle
HR = Right Handle
H = Both Handle
= No handle

PN Example: MCT100-R0-H
1 BAY, CORE CART, RH DR, NO. LK, BOTH HNDL







CORE BENCH

This procedure back table bench brings surgical supplies to the point of care, increasing procedure efficiency and maximizing your procedure room storage. These cabinets can store peel packs, disposables, and other essentials right where you need them at the point of care.

The CORE BENCH was designed specifically for use in the healthcare industry. This high-quality logistic system is ISO 3394 standardized and can be used in all departments of the hospital. Work top options include $\frac{3}{4}$ " thick Stainless Steel or Phenolic, perfect for durability and infection control. The storage accepts the same tray system from CORE CART.



CORE BENCH



Stainless steel &
Phenolic tops



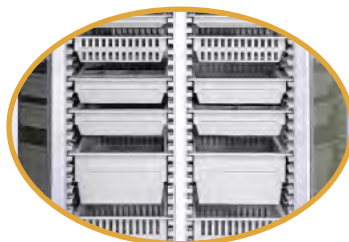
Back table with secure storage,
keeping supplies at the point of care.



Push Handles



Keyed and Electronic
Locks



Multiple Heights of Trays
and Baskets



Multi-Angle Trays, Shelves,
and Baskets



20ga Cold-Rolled Steel
Construction



Easy to Clean, Locking
Casters

PART NUMBER

MBN - - **HG2N**

Bay option

Lock option

Package option

PN Example: MBN201-XX-HG3C



G2N

Maneuvers easily

- Customized solutions for Cath labs, IR labs and General Storage.

- Robust design

- Conforms to UL 60601

- 5" Locking swivel casters

Customizable

- 21 Accessory packages available

- 29 Individual accessories available

- Handle configurations

- 2 Work top options

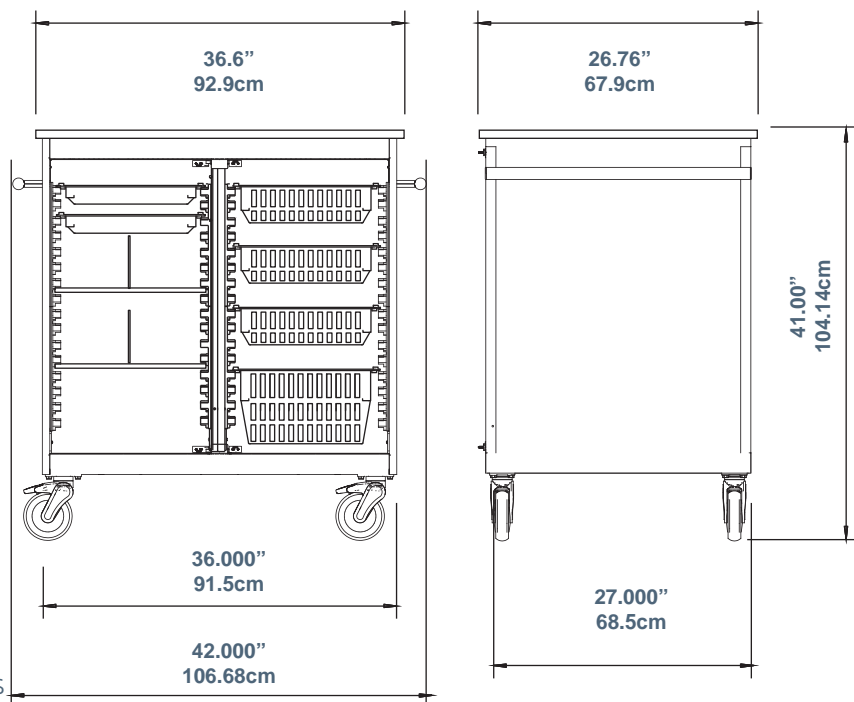
Adaptable to your workflow

- Adaptable as needs change with various accessory packages

- Interchangeable components with EVERHUTCH solutions

- Accommodates variety of medical equipment

Configure your own custom CORE BENCH



Specifications

- Height: 41" x Width: 42" x Depth: 27"

- Weight: 250 LB

- Caster Wheel 5"

Certifications

- Conforms to UL 60601

Finish

- Snow White Powder Coat

Side Handles

- Brushed Aluminum

Warranty

Refer to **EVERHUTCH.com** for complete warranty information.

LOCK OPTION

-01- DISCK LOCK, W/2 KEYS

-02- KEYLESS ELECTRONIC KEYPAD

-03- KEYLESS ELECTRONIC KEYPAD PROXIMITY CARD HID ACCESS

-04- KEYLESS ELECTRONIC KEYPAD iCLASS HID ACCESS HIGH FREQ

HANDLE OPTION

NO HANDLES

H BOTH HANDLES

HR RIGHT HANDLE ONLY

HL LEFT HANDLE ONLY

TOP OPTIONS

Stainless Steel 3/4" SS

0

Phenolic 3/4" PH

0

PART NUMBER

MBN201- **G2N**

Lock option Handle option Top option Package option

PN Example: MBN201-01-HRSSG2N

CONFIGURATIONS

S2E



PART #	QTY	DESCRIPTION
MCT601-KT	-	Tray 2" Light Gray - Loaded w/Dividers
MCT602-KT	-	Tray 4" Light Gray - Loaded w/Dividers
MCT603-KT	-	Tray 8" Light Gray - Loaded w/Dividers
MCT604-KT	-	Basket 4" Light Gray - Loaded w/Dividers
MCT605-KT	-	Basket 8" Light Gray - Loaded w/Dividers
MCT618	-	18" Metal Shelf
MCT619	2	36" Metal Shelf
MCT622	4	Dividers

S2F



PART #	QTY	DESCRIPTION
MCT601-KT	-	Tray 2" Light Gray - Loaded w/Dividers
MCT602-KT	-	Tray 4" Light Gray - Loaded w/Dividers
MCT603-KT	-	Tray 8" Light Gray - Loaded w/Dividers
MCT604-KT	-	Basket 4" Light Gray - Loaded w/Dividers
MCT605-KT	-	Basket 8" Light Gray - Loaded w/Dividers
MCT618	6	18" Metal Shelf
MCT619	-	36" Metal Shelf
MCT622	4	Dividers

201



PART #	QTY	DESCRIPTION
MCT601-KT	-	Tray 2" Light Gray - Loaded w/Dividers
MCT602-KT	-	Tray 4" Light Gray - Loaded w/Dividers
MCT603-KT	-	Tray 8" Light Gray - Loaded w/Dividers
MCT604-KT	-	Basket 4" Light Gray - Loaded w/Dividers
MCT605-KT	-	Basket 8" Light Gray - Loaded w/Dividers
MCT618	-	18" Metal Shelf
MCT619	-	36" Metal Shelf
MCT615	-	Plastic Label Holder
MCT616	-	Label Card

200



PART #	QTY	DESCRIPTION
MCT601-KT	-	Tray 2" Light Gray - Loaded w/Dividers
MCT602-KT	-	Tray 4" Light Gray - Loaded w/Dividers
MCT603-KT	-	Tray 8" Light Gray - Loaded w/Dividers
MCT604-KT	-	Basket 4" Light Gray - Loaded w/Dividers
MCT605-KT	-	Basket 8" Light Gray - Loaded w/Dividers
MCT618	-	18" Metal Shelf
MCT619	-	36" Metal Shelf
MCT615	-	Plastic Label Holder
MCT616	-	Label Card

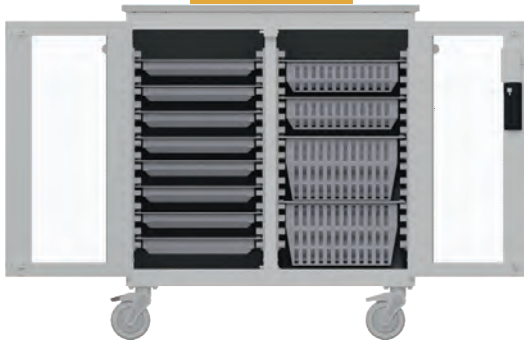
CONFIGURATIONS

G2M



PART #	QTY	DESCRIPTION
MCT601-KT	-	Tray 2" Light Gray - Loaded w/Dividers
MCT602-KT	-	Tray 4" Light Gray - Loaded w/Dividers
MCT603-KT	-	Tray 8" Light Gray - Loaded w/Dividers
MCT604-KT	4	Basket 4" Light Gray - Loaded w/Dividers
MCT605-KT	4	Basket 8" Light Gray - Loaded w/Dividers
MCT618	-	18" Metal Shelf
MCT619	-	36" Metal Shelf
MCT615	-	Plastic Label Holder
MCT616	-	Label Card

G2O



PART #	QTY	DESCRIPTION
MCT601-KT	8	Tray 2" Light Gray - Loaded w/Dividers
MCT602-KT	-	Tray 4" Light Gray - Loaded w/Dividers
MCT603-KT	-	Tray 8" Light Gray - Loaded w/Dividers
MCT604-KT	2	Basket 4" Light Gray - Loaded w/Dividers
MCT605-KT	2	Basket 8" Light Gray - Loaded w/Dividers
MCT618	-	18" Metal Shelf
MCT619	-	36" Metal Shelf
MCT615	12	Plastic Label Holder
MCT616	12	Label Card

G2N



PART #	QTY	DESCRIPTION
MCT601-KT	2	Tray 2" Light Gray - Loaded w/Dividers
MCT602-KT	-	Tray 4" Light Gray - Loaded w/Dividers
MCT603-KT	-	Tray 8" Light Gray - Loaded w/Dividers
MCT604-KT	3	Basket 4" Light Gray - Loaded w/Dividers
MCT605-KT	1	Basket 8" Light Gray - Loaded w/Dividers
MCT618	2	18" Metal Shelf
MCT619	-	36" Metal Shelf
MCT615	6	Plastic Label Holder
MCT616	6	Label Card
MCT622	2	Dividers

G2P



PART #	QTY	DESCRIPTION
MCT601-KT	-	Tray 2" Light Gray - Loaded w/Dividers
MCT602-KT	-	Tray 4" Light Gray - Loaded w/Dividers
MCT603-KT	-	Tray 8" Light Gray - Loaded w/Dividers
MCT604-KT	6	Basket 4" Light Gray - Loaded w/Dividers
MCT605-KT	2	Basket 8" Light Gray - Loaded w/Dividers
MCT618	-	18" Metal Shelf
MCT619	-	36" Metal Shelf
MCT615	-	Plastic Label Holder
MCT616	-	Label Card

NEST CART

Maneuvers easily

- Heavy duty construction
- Conforms to UL 60601
- 3" Locking swivel casters

Supports thorough cleaning

- Integrated seams
- Smooth exposed surfaces
- Chemical resistant powder coat
- Supports infection control practices

Security

- Key Lock available
- Self-closing drawers

Adaptable to any environment

- Ideal for areas with limited space
- Standalone or "NEST" under table
- Full-extension drawers
- Soft-touch closing drawers

Adapts to your workflow

- 31 Configurations of NESTCART
- Accommodates a variety of medical equipment



SITTING

30"



STANDING

36"



ADA

33"



PART NUMBER

MCB03CXX XX XX -00

<u>height</u>	<u>width</u>	<u>door swing</u>	<u>lock option</u>
36	18	L = left	00 = no lock
33	24	R = Right	01 = key lock
30	30		

	Standing 36"	ADA 33"	Sitting 30"
Single Door	MCB03C3624LM-00 MCB03C3624LM-01 MCB03C3624RM-00 MCB03C3624RM-01	MCB03C3324LM-00 MCB03C3324LM-01 MCB03C3324RM-00 MCB03C3324RM-01	MCB03C3024LM-00 MCB03C3024LM-01 MCB03C3024RM-00 MCB03C3024RM-01
Single Door w/Drawer			MCB40E3024LM-00 MCB40E3024LM-01 MCB40E3024RM-00 MCB40E3024RM-01
3 Drawer	MCB00D3618M-00 MCB00D3618M-01 MCB00D3624M-00 MCB00D3624M-01 MCB00D3630M-00 MCB00D3630M-01	MCB00D3318M-00 MCB00D3318M-01 MCB00D3324M-00 MCB00D3324M-01 MCB85D3324M-00	MCB00D3018M-00 MCB00D3018M-01 MCB00D3024M-00 MCB00D3024M-01 MCB00D3030M-00 MCB00D3030M-01
3 Drawer w/PB			MCB26D3018M-00 MCB26D3018M-01 MCB26D3024M-00 MCB26D3024M-01
4 Drawer	MCB08D3618M-00 MCB08D3618M-01 MCB08D3624M-00 MCB08D3624M-01 MCB30D3618M-00 MCB30D3618M-01 MCB30D3624M-00 MCB30D3624M-01 MCB30D3630M-00 MCB30D3630M-01	MCB30D3318M-00 MCB30D3318M-01 MCB30D3324M-00 MCB30D3324M-01	MCB30D3018M-00 MCB30D3018M-01 MCB30D3024M-00 MCB30D3024M-01 MCB30D3030M-00 MCB30D3030M-01
5 Drawer	MCB50D3618M-00 MCB50D3618M-01 MCB50D3624M-00 MCB50D3624M-01	MCB50D3318M-00 MCB50D3318M-01 MCB50D3324M-00 MCB50D3324M-01	
6 Drawer	MCB51D3630M-00 MCB51D3630M-01		
8 Drawer		MCB32D3330M-00 MCB32D3330M-01	
10 Drawer	MCB52D3630M-00 MCB52D3630M-01		

CONFIGURATIONS

SINGLE DOOR



SINGLE DOOR & DRAWER



3 DRAWER PULL OUT BOARD



3 DRAWER 18" - 24"



3 DRAWER DOUBLE 30"



4 DRAWER 18" - 24"



4 DRAWER DOUBLE 30"



5 DRAWER 18" - 24"



6 DRAWER



8 DRAWER



10 DRAWER





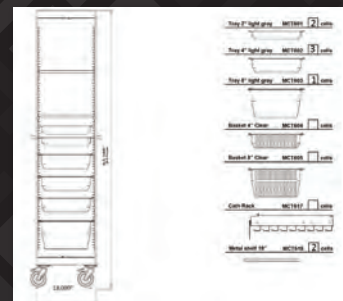
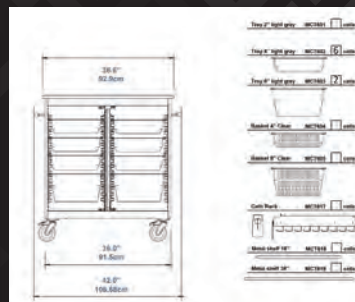
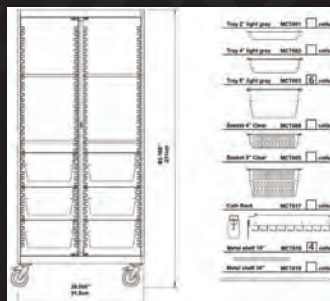
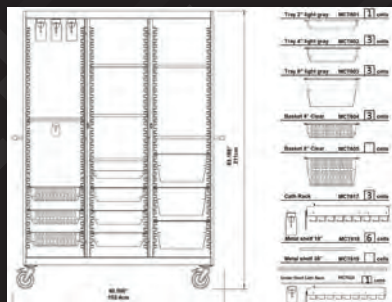
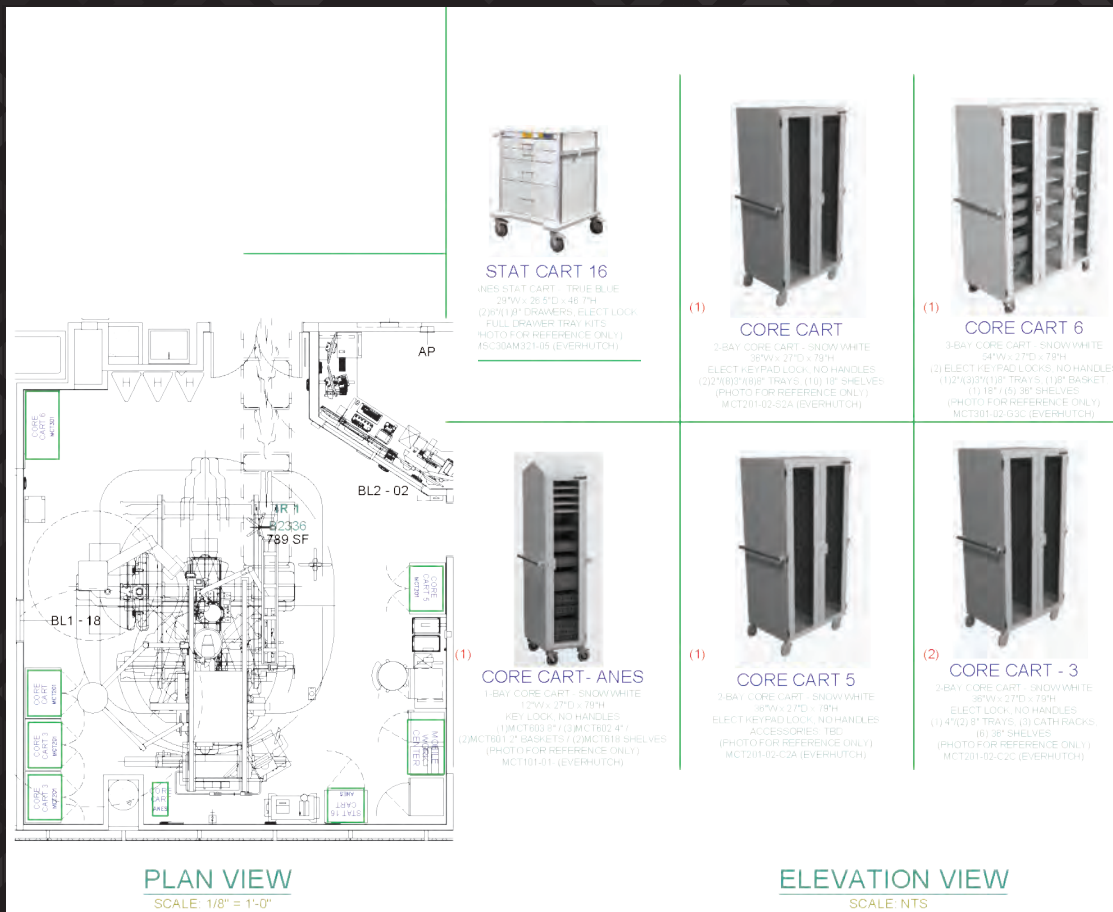
EVERHUTCH **CAPITAL** **PROJECTS**

Florida Hospital – New Construction

This new 204-bed hospital opened in the Spring of 2024 with two six-story towers designed to enhance patient comfort and care. This facility includes general surgery, orthopedic surgery, urology, imaging, cardia catheterization, emergence care, and labor and delivery.

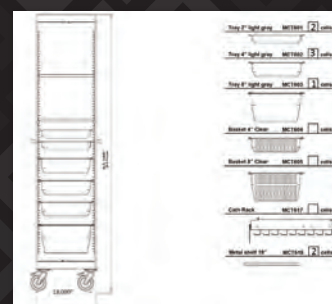
This project included one hundred and thirty mobile carts, including CORE Carts for the cardiac catheterization labs, code and anesthesia carts for labor and delivery as well as the O.R., CORE Carts and CORE Benches for the Endo/Bronch suites, and CORE Carts and STAT Carts for the I.R. Labs.

This project was delivered over a period of two months and included on-time delivery and installation from our location representatives, Beveridge Medical Associates, Inc.





This project included twenty 2-bay CORE Carts with various accessory configurations including pull-out catheter managers, loaded trays and baskets, and general storage with shelves and dividers. Also included were twelve narrow procedure STAT Carts for patient care. This is one of two current projects for this large health system, including a four-story Orthopedic Health and Performance Center.





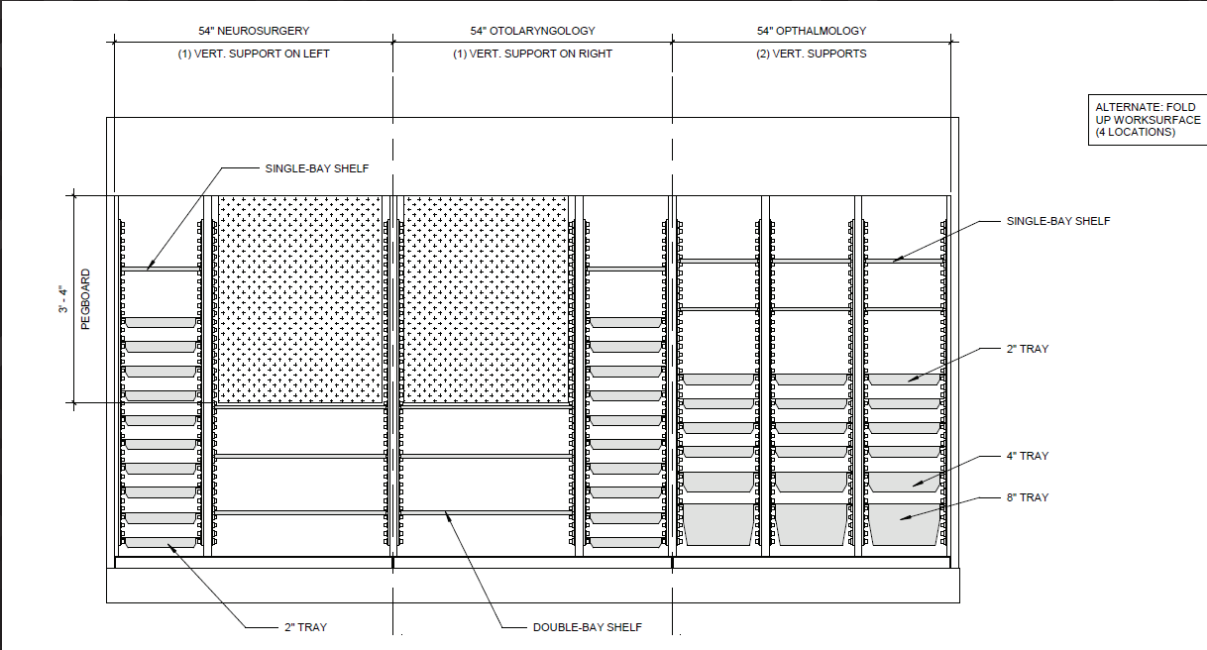
University School of Medicine

Surgical Simulation Lab

Opened in 2024, this multidisciplinary surgical simulation lab provides state-of-the-art platform for hands-on education of surgical trainees in the departments of Otolaryngology, Neurosurgery and Ophthalmology.

This project included several CORE Cabinets including pegboard and trays for instrument storage, custom ceiling enclosures and end scribes to fit the built-in niche for the cabinets.

Part of a larger renovation, Innovative Laboratory Systems met their project’s criteria and delivered a highly functional laboratory and equipment system within budget and on-time.



Pennsylvania Hospital – Hybrid O.R. Renovation

Opening in 2025 for inpatient services, this hospital offers 52 beds, more than 75 exam rooms, and an expanded neonatal unit.

This project included eight custom CORE Cabinets installed into three different niches that included custom locks, ceiling enclosures and end scribes. Located in the corner of the room were four custom base and upper cabinets with matching locks.

The EVERHUTCH team helped facilitate a pre-planning on-site demonstration of CORE Carts, STAT Carts, and CORE Bench, participated in drawing review meetings with the architect and equipment planners, and worked with our distribution partner, CME Corp., to deliver and install the product.



THE EVERHUTCH CAPITAL PROCESS

1. CONSULTATION

- Initial discussion with Architect/Equipment Planners on design intent
- Understand space planning, workflow challenges, and equipment needs
- Focus on identifying appropriate product lines (CORE Cabinets/Carts, Casework, etc.).
- Identify opportunities for on-site product demonstrations

2. REFINEMENT

- Collaborate on custom configurations, finishes, and accessories
- EVERHUTCH finalizes drawings
- Quote issued

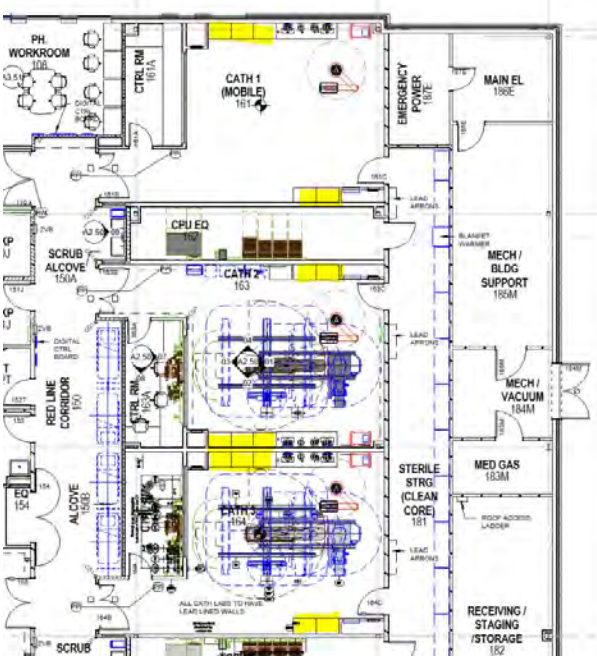
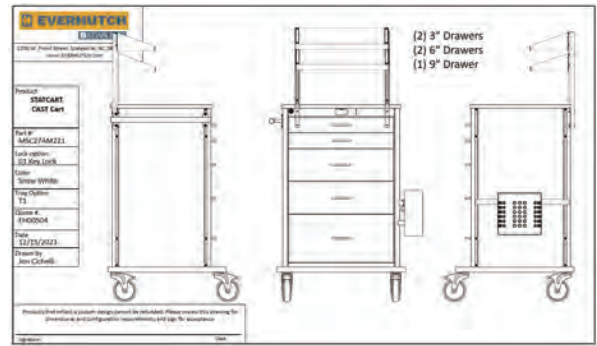
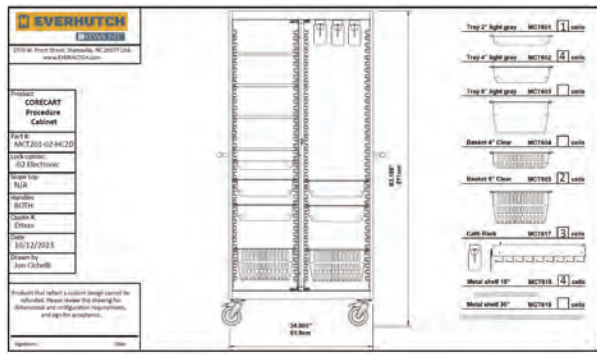
3. MANUFACTURING / WAREHOUSING

- Finalized designs enter production/engineering
- Lead times evaluated and scheduled based on delivery schedule
- Quality control and staging for accurate fulfillment

4. DELIVERY & INSTALLATION

- Logistics arranged for on-time delivery to customer site
- On-site support or installer guidance as needed
- Ensure storage solutions integrate seamlessly into workflow







Founded 1906

Over 117+ years of experience



Statesville, NC

USA Manufacturing

600+

US-Based Associates

350+

Internationally-Based Associates

Largest laboratory

furniture manufacturer in the world. Only place in the world that manufactures wood, metal and resin laboratory furniture on one site.

Bangalore, India

INTL Manufacturing

**India
Singapore
Saudi Arabia**

International Sales Offices



Kewaunee acquires NuAire

NUAIRE

Only place in the world that produces, laboratory grade, wood, metal, technical furniture and resin products from one location - **STATESVILLE, NC**

**WOOD MANUFACTURING PLANT
STEEL MANUFACTURING PLANT
RESIN MANUFACTURING PLANT
OFFICES
DISTRIBUTION SPACE**

**139,000 SQFT.
159,800 SQFT.
64,000 SQFT.
43,200 SQFT.
365,000 SQFT.**



Wood

Metal

Resin





INDUSTRIES



PHARMACEUTICALS



BIOTECHNOLOGY



CHEMICAL



PETROLEUM



ELECTRONICS



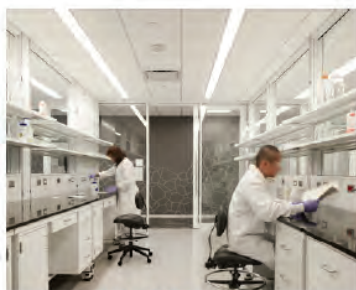
HEALTHCARE



EDUCATION



FOOD & BEVERAGE



FRAGRANCE



MARINE RESEARCH



DEFENSE



FORENSICS

PRODUCTS

**STEEL
CASEWORK**



**WOOD
CASEWORK**



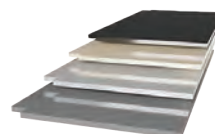
**ADAPTABLE LAB
SYSTEMS**



FUME HOODS



EPOXY RESIN



STAINLESS PROJECTS



LABORATORY PROJECTS







EVERHUTCH

www.EVERHUTCH.com

INFO@EVERHUTCH.COM



2700 W Front St, Statesville, NC 28677