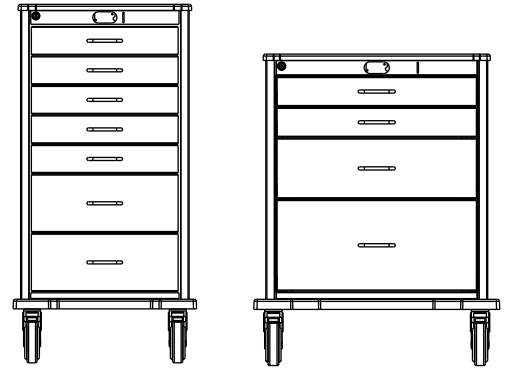


STAT CART

ACCESSORIES



EVERHUTCH

STAT CART | EQUIPMENT MANAGEMENT

The use of an Equipment Management Rail System in any patient care environment “FUTURE-PROOFS THE FACILITY.” Through a lifecycle of changes, it ensures the continuity and flexibility of the equipment and workflow processes for the duration of the built environment while maintaining integrity and preserving the value of the wall system, panel, or substrate. The rail system makes it possible to reduce room revenue loss due to changing equipment and par level bedside inventory, clear valuable floor space, improves cleanliness, reduce HAI's, provides an organized and efficient space for better workflow and HCAHPS scores, and increases hospital profitability.

FROM WALL TO CART



STAT CART | ACCESSORIES

TILT BINS - WHITE PLASTIC BOX WITH CLEAR PLASTIC BINS

MSC641
14"H x 12"W x 14"D
1 Bin



MSC642
14"H x 24"W x 14"D
2 Bin



MSC643
9.5"H x 24"W x 9.5"D
3 Bin



MSC644
8.25"H x 23.75"W x 5.5"D
4 Bin



MSC645
6.5"H x 23.75"W x 4.5"D
5 Bin

BASKETS- WHITE PLASTIC BOX WITH CLEAR PLASTIC BINS



MSC646
4.25"H x 10"W x 7"D
3 Bin



MSC647
4"H x 18"W x 10"D
3 Bin



MSC648
4.75"H x 5.375"D
UTENCIL CUP

HOOKS - & INTEGRATED COUNTING PLATE



MSC649
2.5"H x 1.5"W x 2"D
1 HOOK 2"



MSC650
2.5"H x 1.5"W x 4"D
1 HOOK 4"



MSC651
2.5"H x 12"W x 2"D
3 HOOK 2"



MSC652
2.5"H x 12"W x 4"D
3 HOOK 4"

STAT CART | ACCESSORIES

GLOVE BOX HOLDER - ABS CLEAR PLASTIC (GLOVES NOT INCLUDED)



MSC625
10"H x 18.75"W x 5"D
TRIPLE HORIZONTAL



MSC622
10"H x 18.75"W x 5"D
TRIPLE VERTICAL

MEDICAL GAS



MSC621
16"H x 5.5"W x 5.5"D
**WIRE METAL
OXYGEN HOLDER**



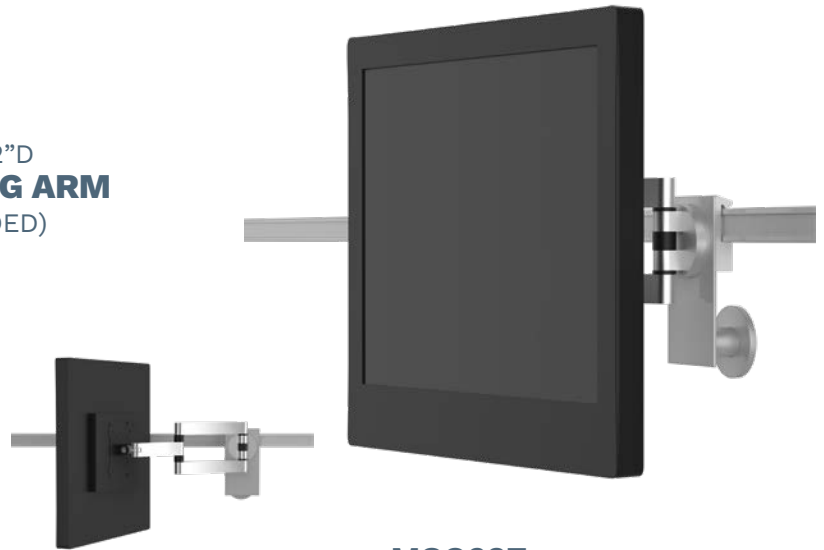
MSC640
6"H x 3.5"W x 8"D
SUCTION PUMP SHELF KIT
(MONITOR NOT INCLUDED)

STAT CART | ACCESSORIES

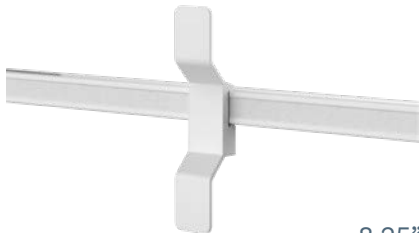
MONITOR MOUNTING AND CABLE MANAGEMENT



MSC634
5.5"H x 5.5"W x 2"D
GCX STYLE SWING ARM
(GCX NOT INCLUDED)



MSC637
6"H x 3.5"W x 8"D
**MOUNTING PLATE AND
ARTICULATING / TILTING VESA MOUNT**
(MONITOR NOT INCLUDED)



MSC654
8.25"H x 1"W x 1.5"D
CORD CLEAT

MISCELLANEOUS - ABS CLEAR PLASTIC (GLOVES NOT INCLUDED)



MSC636
10"H x 18.75"W x 5"D
ACRYLIC CHART HOLDER



MSC653
10"H x 18.75"W x 5"D
**4 OUTLET
POWER STRIP**



MSC640
5.5"H x 5.5"W x 2"D
**DEFIBRILLATOR
SHELF**

STAT CART | ACCESSORIES

SHELVES - FIXED AND FOLDING



MSC632

15"W x 10"D

**FLIP-UP SURFACE 15"
SIDE MOUNTED**

Scratch resistant food grade high density polyethylene.
Indented spill lip. Up to 100lb load capacity.



MSC633

20"W x 18"D

**FLIP-UP SURFACE 20"
REAR MOUNTED**

Scratch resistant food grade high density polyethylene.
Indented spill lip. Up to 100lb load capacity.



MSC630

10"W x 8"D

**10" FIXED WRITING SURFACE
WITH LIP EDGES**



MSC631

14.5"W x 13.5"D

**15" FIXED WRITING SURFACE
WITH LIP EDGES**



MSC667S

29"W

STANDARD WIDTH



MSC667N

22.5"W

NARROW WIDTH

STAT CART | ACCESSORIES

RAILS



MSC657
21.5"
UNIVERSAL SIDE RAIL



MSC658S
23.5"
**STANDARD WIDTH
REAR RAIL**



MSC658N
18"
**NARROW WIDTH
REAR RAIL**



MSC619
XXXXXX
CPR BOARD AND RAIL



MSC655S
23.5"W
**REAR ACCESSORY RAIL KIT
STANDARD WIDTH**



MSC655N
18"W
**REAR ACCESSORY RAIL KIT
NARROW WIDTH**



MSC664
24"H
STANDARD WIDTH



MSC665
38"H
STANDARD WIDTH

STAT CART | ACCESSORIES

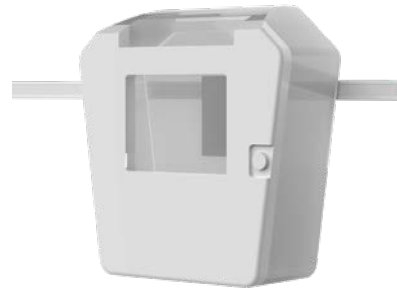
WASTE MANAGEMENT



MSC629
10"H x 18.75"W x 5"D
**12QT WASTE BIN &
AND RAIL MOUNT**



MSC628
10"H x 18.75"W x 5"D
**RAIL MOUNT
FOR WASTE BIN**



MSC623
5"H x 5"W x 1"D
**SHARPS BOX &
RAIL MOUNT**



MSC627
5"H x 5"W x 1"D
**RAIL MOUNT FOR
SHARPS**

INFUSION MANAGEMENT



MSC620
36"H x 20" pole x 4"D
IV POLE



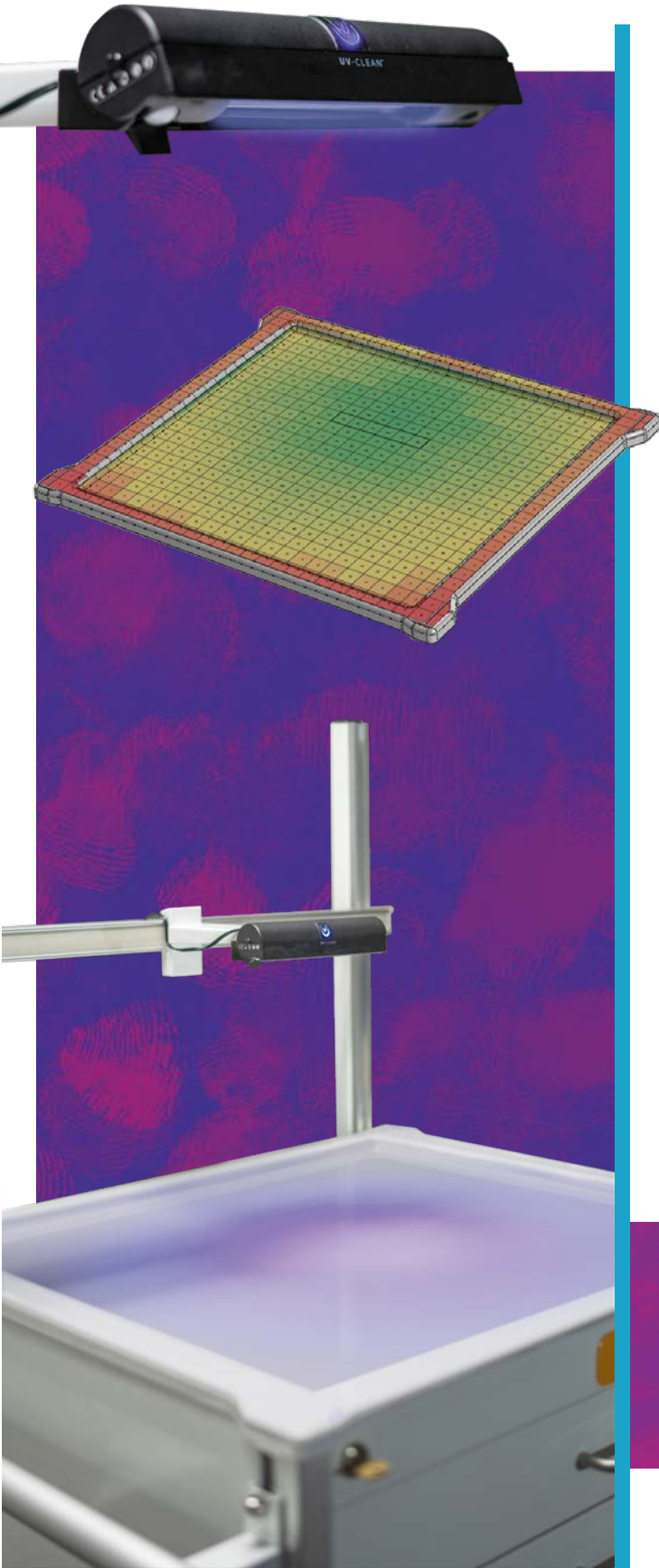
MSC624
1"D x 4"H ON 5' AMF POST
C-CLAMP POLE MOUNT

ACCESSORY EXAMPLES



See all available accessories at EVERHUTCH.com

STAT CART



KILL MICROORGANISMS WITH **UV-CLEAN**

UV-CLEAN by Proximity is the award-winning, **automated device that provides no-touch ultraviolet disinfection** with UV-C light, the most germicidal ultraviolet light. This strong and safe device efficiently inactivates 99.9% of bacteria and viruses on high touch surfaces. With this small, yet powerful device, you can say goodbye to microorganisms and take the fear out of using dirty surfaces.

APPROXIMATE 99% REDUCTION @ 2MINUTES

For the following organisms requires:

Salmonella Species	53 uW/cm2
E. Coli	50 uW/cm2
Influenza	50 uW/cm2
Staphylococcus Species	42 uW/cm2
Coronavirus (SARS 1)	35 uW/cm2
Streptococcus Species	33 uW/cm2

POINT OF CARE: HEALTHCARE FACILITIES

Hospital acquired infections affect millions of people and add billions of dollars to healthcare costs in the U.S. annually. Although hospitals and healthcare facilities implement rigorous cleaning and disinfection practices to prevent Healthcare Associated Infections (HAIs), harmful pathogens still spread throughout susceptible environments. In fact, HAIs, including C. diff, MRSA and Norovirus, can affect millions of people and add billions of dollars to healthcare costs in the U.S. annually.



80%
of pathogens are
transferred by touch



1 out of 31
patients develop a HAI



1.7 million
HAIs occur in U.S.
hospitals each year



Your length of stay in
the hospital increases
by 17.6 days if you get
an HAI