

STAT CART



EVERHUTCH

BY

KEWAUNEE®



STATESVILLE, NC



WIDTH
HEIGHT
COLOR
DRAWER CONFIG
TRAY CONFIG
LOCK OPTIONS
ACCESSORIES

YOUR CART

STAT CART

This procedure cart was specifically designed for patients and caregivers in mind. Defining features promote infection control, adaptability and durability.

STATCART standard sizes and options in drawers and trays were made to be compatible with existing procedure carts on the market today. This compatibility creates uniformity and allows hospitals to easily upgrade their cart without the need to update protocols. **STATCART** is quickly adaptable to meet the demands of different departments with its efficient equipment management Rail System. Due to the adaptability of its components, this system allows customers to find the optimal solution to answer specific clinical needs. Available with multiple lock options including a key lock, electronic keypad and electronic keypad with proximity card reader. The locking system can also be set up to offer dual credential unlocking. The cart is easily maneuvered around on plate-mounted swivel and locking casters.

This high quality storage system is manufactured and sourced in the USA and can withstand any demanding healthcare environment.



Multiple Configs for Top Accessories



ABS Acrylic, Scratch Resistant, Easy Clean Top with Spill Edge. UV Protection to Prevent Yellowing.



Easily Accessible Batteries and Lock Upgrades



Stable and Ergonomic Grab Handles



Keyed, RFID, & Electronic Gang Locks



Sturdy Side Rails Have Minimal Areas to Harbor Bacteria



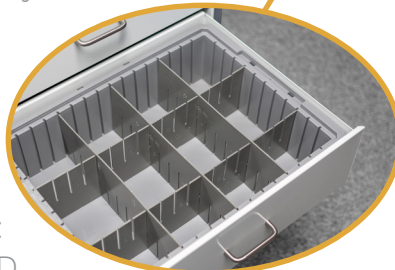
Toolless Accessory Changes Using the Fairfield Rail System



Multiple Depths of Drawers with Split and Single Trays



Sanitary and Strong Lower Bumpers



Drawers Accept Most Common Tray Inserts.
STATCART Drawer Sizes:
Standard: 22.5"W x 17.75"D
Narrow 17"W x 17.75"D:



Sturdy, Easy to Clean, Locking Casters



STAT CART | WIDTH & HEIGHT

STANDARD WIDTH 29"



NARROW WIDTH 22.5"

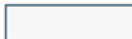


COLOR COMBINATIONS

Drawer faces can be colored separately from cart shell.

■ Powder Coat Finishes

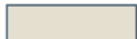
SNOW WHITE



TRUE BLUE



LIGHT NEUTRAL



RAPTURE RED



SAFETY YELLOW



Other colors upon request*

STAT CART

DRAWER CONFIGURATIONS



Each cart height offers several drawer combinations comprised of these drawer heights:

- 3"
- 6"
- 9"

***EXAMPLE BELOW SHOWING 30"H STATCART
DRAWER COMBINATIONS**

MSC30AM050



MSC30AM131



MSC30AM212



MSC30AM240



MSC30AM321



MSC30AM430



MSC30AM511



MSC30AM810



STAT CART | TRAY OPTIONS

SINGLE TRAY PACKET #1



MSC500A3TRKT1

3" D

FULL SINGLE TRAY



MSC500A6TRKT1

6" D

FULL SINGLE TRAY



MSC500A9TRKT1

8" D

FULL SINGLE TRAY

SPLIT TRAY PACKET #2



MSC500A3TRKT2

3" D

SPLIT TRAY



MSC500A6TRKT2

6" D

SPLIT TRAY



MSC500A9TRKT1

8" D

FULL SINGLE TRAY

STAT CART | LOCK OPTIONS

CONFIGURE YOUR CART SECURITY WITH THESE LOCK OPTIONS



MANUAL LOCK -01
comes as standard

ELECTRONIC LOCK -05

- 250 user/supervisor codes
- Flush mounted membrane keypad with Battery pack.
- Standard RJ11 communications port for audit trail download
- Audit trail of last 1500 access attempts with date, time and user name
- Motor driven latching mechanism



KEYLESS ELECTRONIC KEYPAD -06
PROXIMITY CARD HID ACCESS

KEYLESS ELECTRONIC KEYPAD -07
I-CLASS HID ACCESS HIGH FREQUENCY

DRAWER LOCK -08



GANG LOCK -09

STAT CART | CONFIGURATIONS

EMERGENCY CART



PROCEDURE CART



STAT CART | CONFIGURATIONS

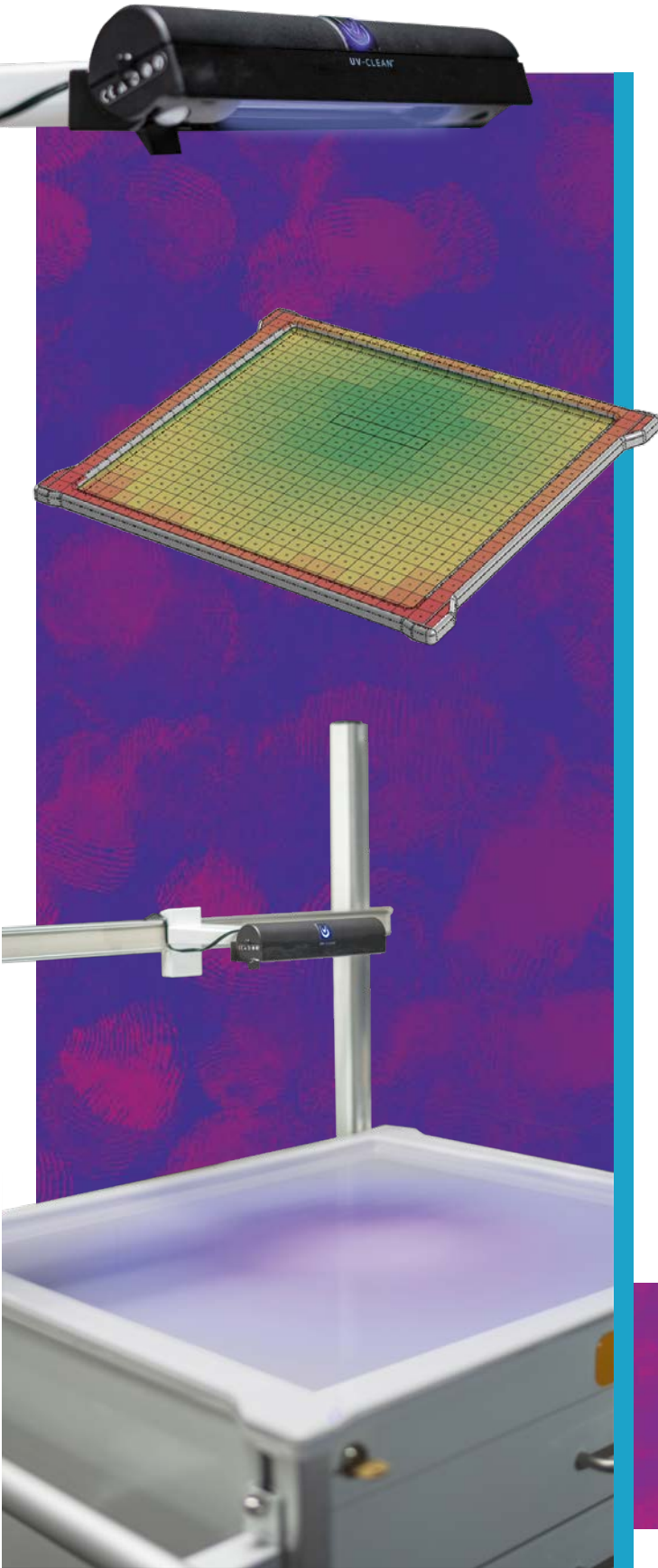
ANESTHESIA CART



ISOLATION CART



STAT CART



KILL MICROORGANISMS WITH **UV-CLEAN**

UV-CLEAN by Proximity is the award-winning, automated device that provides no-touch ultraviolet disinfection with UV-C light, the most germicidal ultraviolet light. This strong and safe device **efficiently inactivates 99.9% of bacteria and viruses** on high touch surfaces. With this small, yet powerful device, you can say goodbye to microorganisms and remove concerns with an enhanced cleaning protocol to improve current infection control practices.

APPROXIMATE 99% REDUCTION @ 2MINUTES

For the following organisms requires:

Salmonella Species	53 uW/cm ²
E. Coli	50 uW/cm ²
Influenza	50 uW/cm ²
Staphylococcus Species	42 uW/cm ²
Coronavirus (SARS 1)	35 uW/cm ²
Streptococcus Species	33 uW/cm ²

POINT OF CARE: HEALTHCARE FACILITIES

Hospital acquired infections affect millions of people and add billions of dollars to healthcare costs in the U.S. annually. Although hospitals and healthcare facilities implement rigorous cleaning and disinfection practices to prevent Healthcare Associated Infections (HAIs), harmful pathogens still spread throughout susceptible environments. In fact, HAIs, including C. diff, MRSA and Norovirus, can affect millions of people and add billions of dollars to healthcare costs in the U.S. annually.



80%
of pathogens are
transferred by touch



1 out of 31
patients develop a HAI



1.7 million
HAIs occur in U.S.
hospitals each year



Your length of stay in
the hospital increases
by 17.6 days if you get
an HAI

STAT CART | EQUIPMENT MANAGEMENT

The EVERHUTCH equipment management system provides flexibility and the opportunity to configure any cart to work in any department. Accessories can be easily removed, added or relocated to another position on the cart to increase efficiency and ergonomics. These accessories can also be moved easily from existing wall equipment rail systems to the cart and back again. This system gives healthcare workers the flexibility needed for optimum patient care.

FROM WALL TO CART



STAT CART | ACCESSORIES

TILT BINS - WHITE PLASTIC BOX WITH CLEAR PLASTIC BINS

MSC641
14"H x 12"W x 14"D
1 Bin



MSC642
14"H x 24"W x 14"D
2 Bin



MSC643
9.5"H x 24"W x 9.5"D
3 Bin



MSC644
8.25"H x 23.75"W x 5.5"D
4 Bin



MSC645
6.5"H x 23.75"W x 4.5"D
5 Bin

BASKETS- WHITE PLASTIC BOX WITH CLEAR PLASTIC BINS



MSC646
4.25"H x 10"W x 7"D
3 Bin



MSC647
4"H x 18"W x 10"D
3 Bin



MSC648
4.75"H x 5.375"D
UTENCIL CUP

HOOKS - & INTEGRATED COUNTING PLATE



MSC649
2.5"H x 1.5"W x 2"D
1 HOOK 2"



MSC650
2.5"H x 1.5"W x 4"D
1 HOOK 4"



MSC651
2.5"H x 12"W x 2"D
3 HOOK 2"



MSC652
2.5"H x 12"W x 4"D
3 HOOK 4"

STAT CART | ACCESSORIES

GLOVE BOX HOLDER - ABS CLEAR PLASTIC (GLOVES NOT INCLUDED)



MSC625
10"H x 18.75"W x 5"D
TRIPLE HORIZONTAL



MSC622
10"H x 18.75"W x 5"D
TRIPLE VERTICAL



MSC626
10"H x 6"W x 5"D
**SINGLE VERTICAL
& HORIZONTAL MOUNT**

MEDICAL GAS



MSC621
16"H x 5.5"W x 5.5"D
**WIRE METAL
OXYGEN HOLDER**



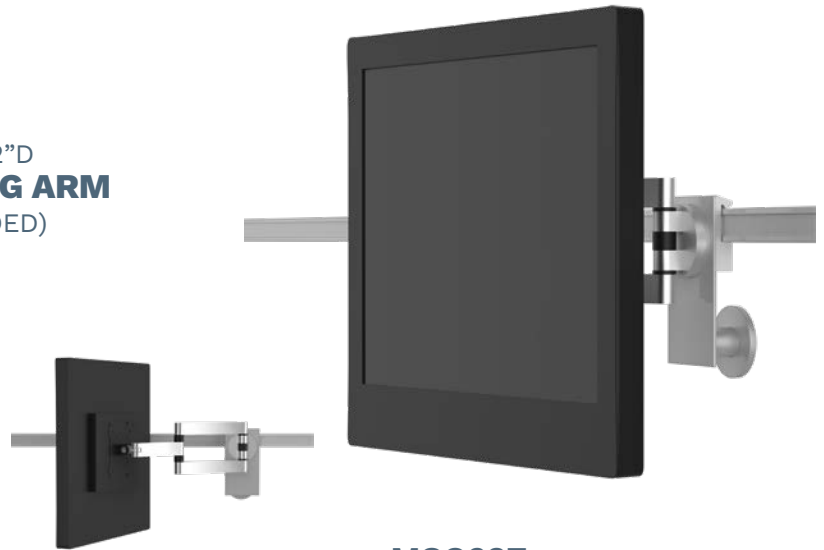
MSC635
6"H x 3.5"W x 8"D
SUCTION PUMP SHELF KIT
(MONITOR NOT INCLUDED)

STAT CART | ACCESSORIES

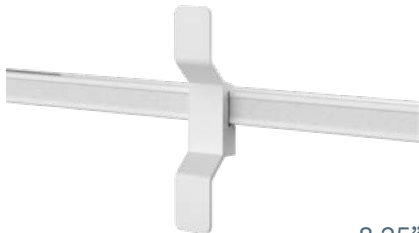
MONITOR MOUNTING AND CABLE MANAGEMENT



MSC634
5.5"H x 5.5"W x 2"D
GCX STYLE SWING ARM
(GCX NOT INCLUDED)



MSC637
6"H x 3.5"W x 8"D
**MOUNTING PLATE AND
ARTICULATING / TILTING VESA MOUNT**
(MONITOR NOT INCLUDED)



MSC654
8.25"H x 1"W x 1.5"D
CORD CLEAT

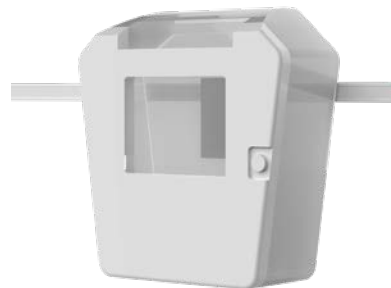
WASTE MANAGEMENT



MSC629
10"H x 18.75"W x 5"D
**12QT WASTE BIN &
AND RAIL MOUNT**



MSC628
10"H x 18.75"W x 5"D
**RAIL MOUNT
FOR WASTE BIN**



MSC623
5"H x 5"W x 1"D
**SHARPES BOX &
RAIL MOUNT**



MSC627
5"H x 5"W x 1"D
**RAIL MOUNT FOR
SHARPES**

STAT CART | ACCESSORIES

SHELVES - FIXED AND FOLDING



MSC632

15"W x 10"D

**FLIP-UP SURFACE 15"
SIDE MOUNTED**

Scratch resistant food grade high density polyethylene.
Indented spill lip. Up to 100lb load capacity.



MSC633

20"W x 18"D

**FLIP-UP SURFACE 20"
REAR MOUNTED**

Scratch resistant food grade high density polyethylene.
Indented spill lip. Up to 100lb load capacity.



MSC630

10"W x 8"D

**10" FIXED WRITING SURFACE
WITH LIP EDGES**



MSC631

14.5"W x 13.5"D

**15" FIXED WRITING SURFACE
WITH LIP EDGES**



MSC667S

29"W

**STANDARD WIDTH
ACCESSORIES SHELF**



MSC667N

22.5"W

**NARROW WIDTH
ACCESSORIES SHELF**

STAT CART | ACCESSORIES

RAILS



MSC657
21.5"
UNIVERSAL SIDE RAIL



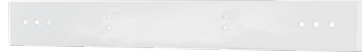
MSC658S
23.5"
**STANDARD WIDTH
REAR RAIL**



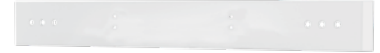
MSC658N
18"
**NARROW WIDTH
REAR RAIL**



MSC619
XXXXXX
CPR BOARD AND RAIL



MSC655S
23.5"W
**REAR ACCESSORY RAIL KIT
STANDARD WIDTH**



MSC655N
18"W
**REAR ACCESSORY RAIL KIT
NARROW WIDTH**



MSC664
24"H
STANDARD HEIGHT



MSC665
38"H
EXTENDED HEIGHT

STAT CART | ACCESSORIES

MISCELLANEOUS - ABS CLEAR PLASTIC (GLOVES NOT INCLUDED)



MSC636
10"H x 18.75"W x 5"D
ACRYLIC CHART HOLDER



MSC653
10"H x 18.75"W x 5"D
**4 OUTLET
POWER STRIP**



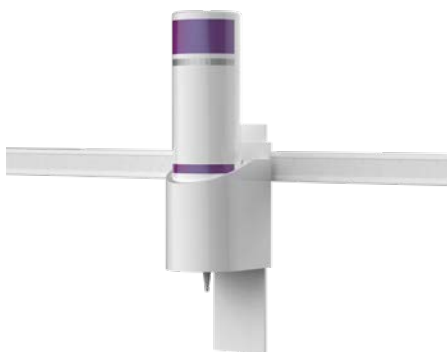
MSC640
5.5"H x 5.5"W x 2"D
**DEFIBRILLATOR
SHELF**



MSC606
STANDARD TOP



MSC607
NARROW TOP



MSC636
7"H x 2.5"W x 1"D
**FOAM DISPENSER
& BRACKET**



MSC663
RAIL BRACKET



MSC618
SIDE HANDLE

STAT CART | ACCESSORIES

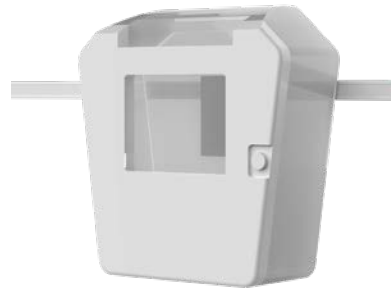
WASTE MANAGEMENT



MSC629
10"H x 18.75"W x 5"D
**12QT WASTE BIN &
AND RAIL MOUNT**



MSC628
10"H x 18.75"W x 5"D
**RAIL MOUNT
FOR WASTE BIN**



MSC623
5"H x 5"W x 1"D
**SHARPES BOX &
RAIL MOUNT**



MSC627
5"H x 5"W x 1"D
**RAIL MOUNT FOR
SHARPES**

INFUSION MANAGEMENT



MSC620
36"H x 20" pole x 4"D
IV POLE



MSC624
1"D x 4"H ON 5' AMF POST
C-CLAMP POLE MOUNT

ACCESSORY EXAMPLES



See all available accessories at EVERHUTCH.com



BY
KEWAUNEE®

At EVERHUTCH we're making vital products for the healthcare space. We provide you with **STORAGE WITH PURPOSE** that you need to organize and optimize your environment.

EVERHUTCH leverages more than a century of experience from Kewaunee, a recognized global leader in the design, manufacture, and installation of laboratory, healthcare, and technical furniture products.

A North Carolina based company founded in **1906**, **KEWAUNEE'S** history of quality products and scientific expertise empowers EVERHUTCH to provide you with healthcare solutions to deliver quality patient care. With a suite of products designed to meet the needs of both the modern healthcare setting and clinical lab space, flexibility and adjust ability are essential.

We've got you from start to finish. Our products are proudly made in the US under one roof, ensuring quality and reliability through the entire process.

