

CORE CART



EVERHUTCH

CORE CART

The cell storage system was specifically designed for use in the healthcare industry. This high-quality logistic system is ISO 3394 standardized and can be used in all departments of the hospital. Because of the adaptability of its components, this system allows customers to find the optimal solution that answers to their specific needs while saving up to 30% of space in comparison to more traditional shelving systems.

Available with multiple lock options, including keyed lock, electronic keypad, and electronic keypad with proximity card reader (two frequencies).

The cart is on four swivel locking casters for ease of movement and designed in a powder coated steel for efficient cleaning, and includes two side handles for easy maneuverability.

- Available heights 76"
- Key lock options
- Tempered glass doors



EVERHUTCH



FEATURES

CORE CART



Sloped Tops



Catheter Racks



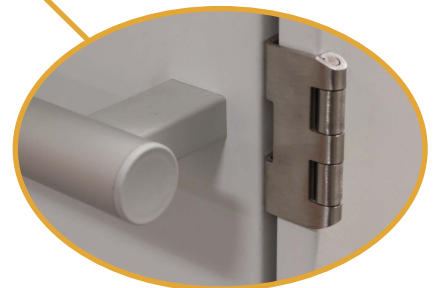
Trays, Shelves and baskets



Keyed and Electronic locks



Interior Dividers allow for multiple storage configurations



Brushed aluminum handles



Multiple Depths of Trays and baskets



5" Swivel locking casters



THERE ARE TWO KINDS...

3 BAY

2 BAY



Maneuvers easily

- Customized solutions for Cath labs, IR labs and General Storage.
- Robust design
- Conforms to UL 60601
- 5" Locking swivel casters

Customizable

- 21 Accessory packages available
- 29 Individual accessories available

Adaptable to your workflow

- Adaptable as needs change with various accessory packages
- Interchangeable components with EVERHUTCH solutions
- Accommodates variety of medical equipment
- Configure your own custom CORE Cart

SPECIFICATIONS



2 BAY

SPECIFICATIONS

- Height: 78.75" x Width: 36" x Depth: 27"
- Weight: 275 LB
- Caster Wheel 5"

Certifications

- Conforms to UL 60601

Finish

- Snow White Powder Coat

Door Handles

- Brushed Stainless Steel

Side Handles

- Brushed Aluminum



3 BAY

SPECIFICATIONS

- Height: 78.75" x Width: 54" x Depth: 27"
- Weight: 375 LB
- Caster Wheel 5"

Certifications

- Conforms to UL 60601

Finish

- Snow White Powder Coat

Door Handles

- Brushed Stainless Steel

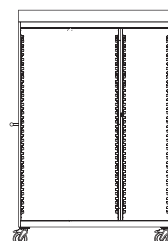
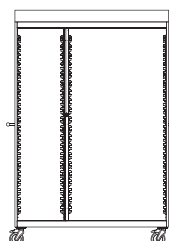
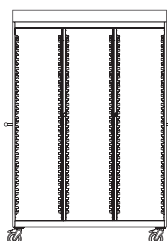
Side Handles

- Brushed Aluminum

3 BAY



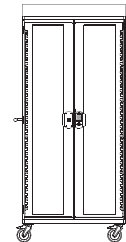
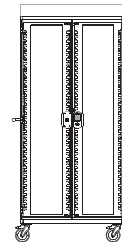
CONFIGURATIONS



2 BAY



CONFIGURATIONS

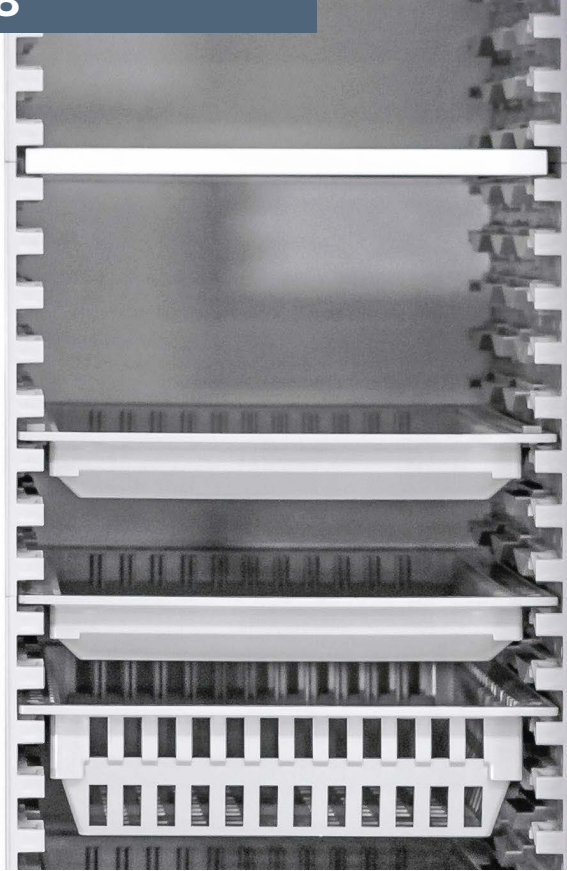
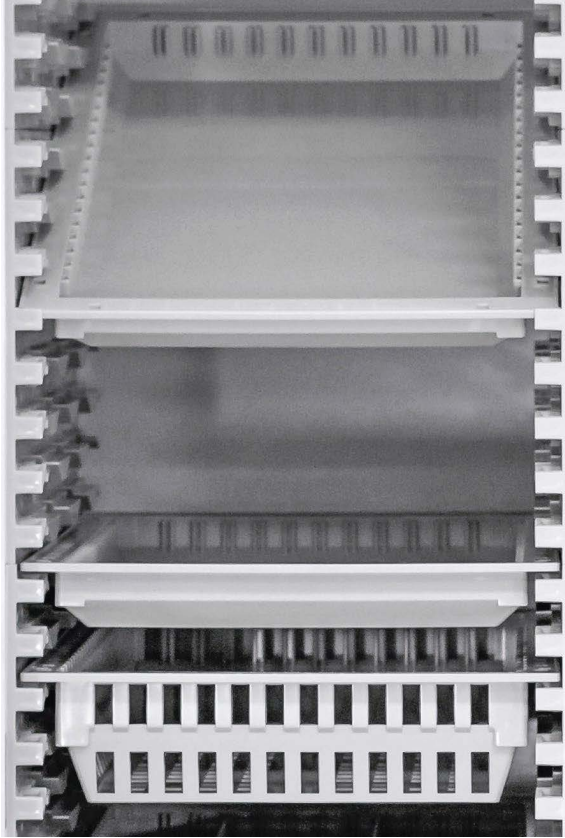


CORE
CART

EVERHUTCH CORE CART

ACCESSORIES

TRAYS & BASKETS: 2"-4"-8"



SLOPED TOP



CATHETER RACK



LOCK OPTION



METAL SHELF





At Everhutch we're designing, engineering and manufacturing vital products for the healthcare space. We provide you with the tools to organize and optimize your environment.

Everhutch leverages more than a century of experience from Kewaunee, a recognized global leader in the design, manufacture, and installation of laboratory furniture products, in: research, education, healthcare, industry and government spaces. A North Carolina based company founded in 1906, Kewaunee's history of quality products and scientific expertise empowers Everhutch to provide you with healthcare solutions and deliver quality patient care. With a suite of products designed to meet the needs of a modern healthcare setting and clinical lab space, flexibility and adjustability are essential.

We've got you, from start to finish. Our products are proudly made in the U.S. under one roof, ensuring quality and reliability throughout the entire process.

CORE CART



NEST CART



PREP PACK



KEWAUNEE®
EVERHUTCH
2700 W Front St, Statesville, NC 28677

Sales@**EverHutch**.com